

**GARRETT®**  
METAL DETECTORS  
*International*



**YOUR SPORT. YOUR GARRETT.**  
**DISCOVER YOUR OWN PATH TO ADVENTURE!**



# GARRETT. THE BEST GEAR FOR ANY ADVENTURE.



**AT**  
ALL TERRAIN

Weatherproof. Waterproof. All Terrain Versatility.  
Garrett AT detectors—like AT Max, AT Pro and  
AT Gold—are made for extreme adventure.

Pages  
8–15

You might get there by horseback, by ATV or by hiking. It might be a multi-day camping trip. Or it could be a day excursion to parts unknown.

Be sure to take along a Garrett detector and gold pan set on your next outing. You never know where a rustic cabin might appear or whether that little

stream just might contain some gold. Good things come to those who seize the moment.

Make Garrett a fun part of your next outdoor adventure.

**Discovery awaits . . .**



**ACE**  
Pages 16–24

Jump right into the sport of metal detecting with a Garrett ACE detector. Big features, small prices, and a world of possibilities.





**Z-Lynk**  
WIRELESS

Headphones. *Pro-Pointer*. Detector built-in feature. When you choose Garrett Z-Lynk Wireless Technology, you are choosing lightning fast freedom.

(P)  
Pgs 4–5,  
46–47



**GTL**  
2500

See your target size before you dig! The *GTL 2500* is also an excellent cache machine, with 2-box coil options.

Pages  
26–28,  
43



**Sea Hunter**  
Mark II  
ATX

**PULSE INDUCTION (PI) DETECTORS**  
Specialty detectors for gold prospecting and relic hunting in mineralized soils, and underwater to 200 foot depths.

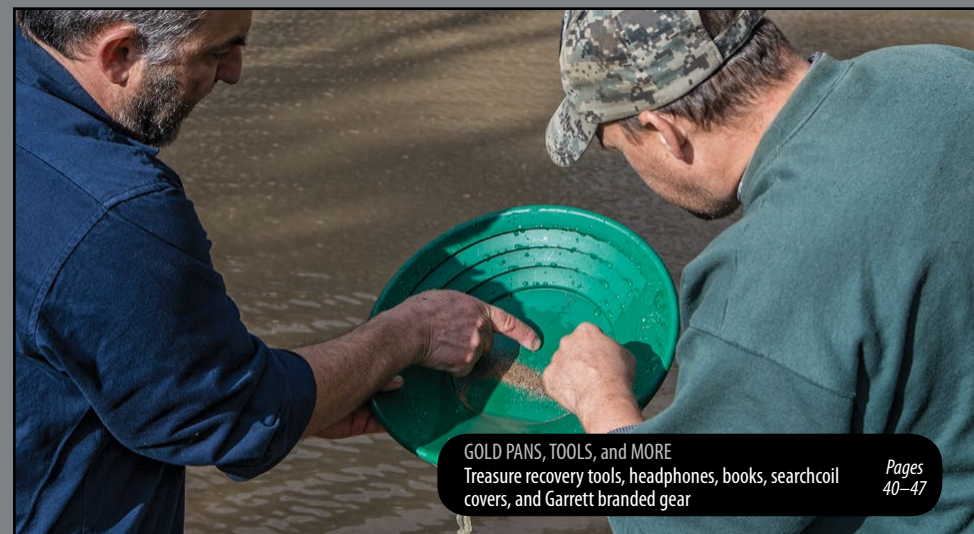
Pages  
29–35



**PRO-POINTER®**

Find your targets faster. Now three great options to choose from!

Pages  
5, 36–39



**GOLD PANS, TOOLS, and MORE**  
Treasure recovery tools, headphones, books, searchcoil covers, and Garrett branded gear

Pages  
40–47





# Wireless Technology Solutions for Detecting

Headphones • Transmitters • Receivers • Complete Wireless Kits



**CUT THE CORD**  
to your detector!

## Z-Lynk Advantages:

### Simply Faster

Garrett's Z-Lynk technology is designed for a near-zero delay from your detector to your headphones. The Z-Lynk Wireless System operates with a 17-millisecond delay—**six times faster than Bluetooth speed!**

### Simply Versatile

The Z-Lynk Wireless System is universal, designed to work with most brands of metal detectors and wired headphones.

### Near-Zero Delay Speeds Target Recovery

Garrett's Z-Lynk Wireless System operates up to four times faster than some wireless detector audio kits. This means you hear your target signal while the searchcoil is directly over the target with no delay. This means more accurate pinpointing and faster treasure recovery.

### Extended Hunting Time per Charge

Get up to 30 hours of operation per charge, more than enough to get you through a full day. Recharge your Z-Lynk transmitter and receiver modules by plugging them into any USB charging port—such as your laptop, your vehicle's USB port, or a USB phone charger.

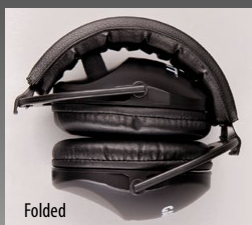
### American-Made Quality

With Garrett 2-year warranty on performance.



**Z-Lynk Wireless System**

Use with any Garrett  
Z-Lynk detector or  
transmitter module.



### Garrett MS-3 Z-Lynk Wireless Headphones

- Built-in Z-Lynk receiver. High-fidelity audio.
- Volume control. Adjust signal levels to suit individual hearing requirements and to enhance weak signals.
- Comfortable headband and ear cushions.
- Folds down for easy storage and transport.
- USB charging cable included.
- Speaker impedance: 8 ohms
- Frequency response: 30-18,000 Hz.

PN: 1627710

### ALSO AVAILABLE:

### Garrett MS-3 Wireless Z-Lynk Kit



- Includes MS-3 Wireless Headphones, Z-Lynk WT-1 transmitter module, a 2-pin (AT) audio cable jack, a 1/4" audio cable jack, a mounting band, and two USB charging cables.

• *Ready to connect to any style metal detector!*

PN:1627720

See pages 46-47 for complete selection of Z-Lynk Wireless kits and accessories.



# The Ultimate Wireless Solution for Any Metal Detector!

## MS-3 Wireless Headphone Kit with

**PRO-POINTER®AT**

**Z-Lynk**

All Terrain Pinpointer

PN:1142210

**NEW**



Hear both detector and pinpointer alarms in your headphones, even in noisy environments (beach, high winds, congested urban areas)



• Ready to connect to any style metal detector!

### Includes:

- Pro-Pointer AT Z-Lynk Pinpointer
- Web Holster
- MS-3 Z-Lynk Wireless Headphones
- WT-1 Z-Lynk Wireless Transmitter
- All necessary cable connectors
- Owner's Manuals

See pages 36–39 for complete selection  
of Garrett Pro-Pointer pinpointers.



# VLF DETECTORS

Recommended for most hunting environments

## What's a VLF metal detector?

The most commonly-used metal detectors are Very Low Frequency (VLF) models, which continually transmit energy at a single powerful frequency, generally ranging between 3 kHz and 30 kHz.

## Advantages of VLF Detectors

Most soils you will search contain only light to moderate mineralization. In these environments, the single frequency of a VLF offers greater depth capabilities, enhanced Target ID, and better discrimination. VLF detectors are also very energy efficient and are less susceptible to external noise and interference.

In short, it is the most appropriate technology for detecting the broadest range of targets over the most common ground conditions.

## Things to Know About VLF Detectors:

- VLF metal detectors are also commonly referred to as Single-Frequency or Continuous Wave detectors.
- Saltwater environments and heavily mineralized soils can cause a loss of detection depth and Target ID accuracy. Pulse induction detectors are often favored here.
- Lower frequency detectors tend to be more sensitive to more highly conductive metals such as silver or brass. Higher frequencies are generally more sensitive to lower conductivity metals such as gold, platinum, and lead.

## VLF Tip: Ground Balance Feature

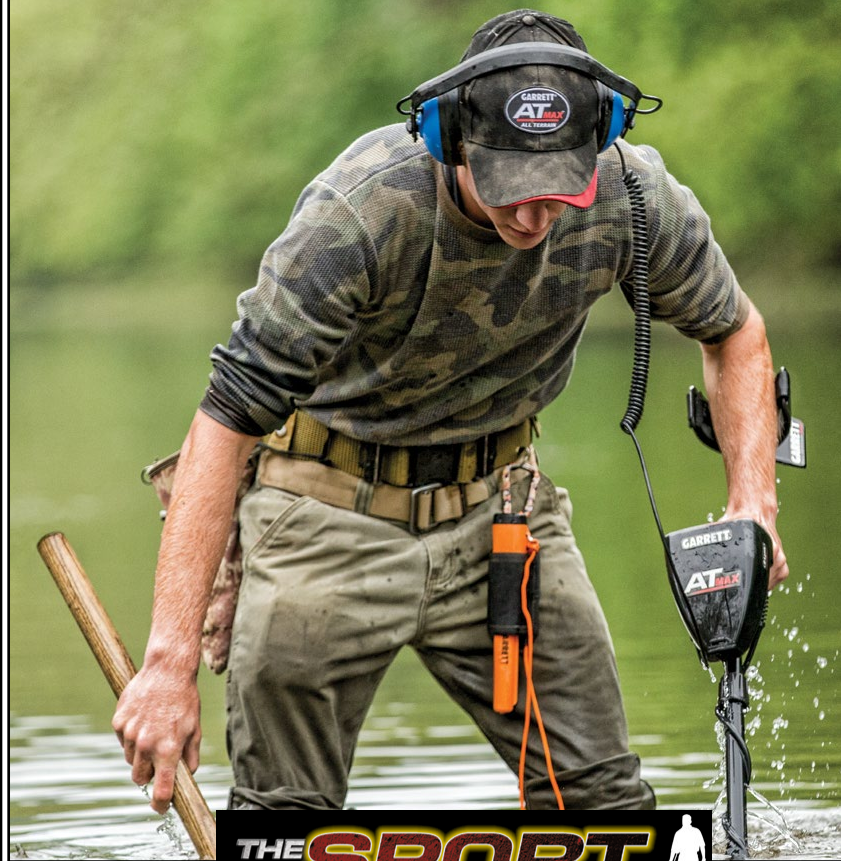
Soil mineralization levels often change in the field, and this can create unstable detector performance. Higher-end detector models with Ground Balance features allow the user to adjust the detector's ground balance as these conditions change. Ground balancing a detector calibrates it to the soil conditions, resulting in deeper target detection, more accurate target information, and stable detector operation.





# NO BOUNDARIES

Weatherproof.  
Waterproof to 10 feet.  
Just what you'd expect  
with "All-Terrain"  
in the name.



THE **SPORT**™  
OF  
METAL DETECTING







# AT<sup>TM</sup>MAX<sup>TM</sup>

INTERNATIONAL

PN: 1142160  
batteries included



She Detector

*\*Shown with optional waterproof headphones.*

*Learn more about AT Max technology on page 14.*

# AT<sup>TM</sup>MAX<sup>TM</sup>

INTERNATIONAL

## Maximum Performance, Fully Wireless!

This is Garrett's most powerful All Terrain VLF detector—ideal for coin shooting, relic hunting, and more!

### • Built-in Z-Lynk™ Wireless Technology

Cut the cords! Integrated wireless circuitry transmit signals to your MS-3 Wireless Headphones, included at no extra cost!

### • Maximum Detection Depth

Enhanced electronics, a 13.6 kHz operating frequency, and eight Sensitivity/Depth adjustments allow the user to detect a wide range of targets—including silver coins, gold jewelry, and brass relics—deeper than other Garrett AT detectors.

### • Advanced Ground Balance Options

Automatic and manually adjustable for improved performance. An automated Ground Balance Window feature will simultaneously ground balance to a range of values to help in severely mineralized areas. The 175-point ground balance range includes saltwater.

### • All Terrain Versatility

Weatherproof design for dusty, humid, or wet environments; and fully submersible to 10-foot depth. For underwater use, optional wired headphones must be used.

### • Backlight

Illuminates LCD screen for improved visibility in low light situations.

### • True All-Metal Mode

Detects all types of metal and provides the greatest possible detection depth and sensitivity.

### • All Metal Iron Audio™

**Garrett Exclusive** feature that audibly identifies discriminated iron while operating in a True All-Metal Mode (also available in the three Discrim Modes).

### • Digital Target ID

Numeric identification scale from 0 to 99.

### • Adjustable Threshold

User can manually adjust the audio threshold (the constant background sound or “hum”) to better hear targets.

### • High-Resolution Iron Discrimination™

### • Fast Recovery Speed

**More Info:** Continuous coin depth indicator to help determine target depth. Four search modes plus Pinpoint. Battery condition indicator. Adjustable Frequency helps eliminate interference.

AT Max International



# THE ULTIMATE ALL TERRAIN DETECTOR.



8.5" x 11" **PROformance™**  
DD searchcoil included

8.5" x 11" searchcoil  
cover included  
PN: 1606600

Z-Lynk MS-3 Wireless  
headphones included  
PN: 1627710

See pg. 15 for interchangeable AT Max searchcoils.





# AT<sup>TM</sup><sub>GOLD</sub>

PN: 1140680  
batteries included



Learn more about AT Gold technology on page 14.



# AT<sup>TM</sup><sub>GOLD</sub>

## All Terrain, All Treasure

Ideal for gold nuggets, coins, relics, caches and jewelry in every terrain, even in fresh water to ten feet.

### • True All-Metal Mode

Detects all types of metal and provides the greatest possible detection depth and sensitivity.

### • All Metal Iron Audio<sup>TM</sup>

**Garrett Exclusive** feature that audibly identifies discriminated iron while operating in a True All-Metal Mode (also available in the two Discrim Modes).

### • Higher Frequency

18 kHz to enhance detection of small gold nuggets.

### • Ground Balance Window

**Garrett Exclusive** feature that allows user to "spread" the ground balance setting to reduce the response to subtle ground variations.

### • All Terrain Versatility

Weatherproof design for dusty, humid, or wet environments; and fully submersible to 10-foot depth.

### • High-Resolution Iron Discrimination<sup>TM</sup>

Provides fine resolution of iron discrimination (44 levels) for the most precise ability to separate a good target from iron trash.

### • Digital Target ID

Numeric scale from 0 to 99; indicates a target's conductivity.

### • Pro Mode Audio

Proportional audio response and Tone Roll Audio features provide more target information. See page 14.

### • Fast Track<sup>TM</sup> Ground Balance

Automatic feature that allows the user to quickly ground balance the detector in mineralized soil conditions. Ground balance can also be adjusted manually.

### • Adjustable Threshold

User can manually adjust the audio threshold (the constant background sound or "hum") to better hear targets.

### • Fast Recovery Speed

Allows greater ability to pick out good targets amongst trash.

### • Three Search Modes plus Pinpoint.

**More Info:** Continuous coin depth indicator to help determine target depth. Battery condition indicator. Graphic Target Analyzer identifies target's conductivity. Adjustable Frequency helps eliminate interference.

AT Gold



# IT'S HOT ON GOLD NUGGETS, RELICS, COINS AND MUCH MORE!



5" x 8" **PROformance™**  
DD searchcoil included



*MS-2 headphones included*

See page 15 for interchangeable AT Gold searchcoils.



**The Hoover Boys**



Dan from White City, OR  
found this 4.67 ounce gold  
nugget specimen next to an  
old wash plant using his AT Gold.



**From  
the Field**

Real customer finds  
made with the AT Gold



[garrett.com](http://garrett.com) 



# AT<sup>PRO</sup> INTERNATIONAL™

PN: 1140560  
batteries included



Learn more about AT Pro  
technology on page 14.

# AT<sup>PRO</sup> INTERNATIONAL™

## Bring Hunted-Out Sites Back to Life:

Impressive recovery speed, target separation and detection depth!

### • Pro Mode Audio

Proportional Audio response and Tone Roll Audio features allows user to hear subtle changes in target's response to better judge conductivity, size, shape and depth.

### • All Terrain Versatility

Weatherproof design for dusty, humid, or wet environments; and fully submersible to 10-foot depth.

### • High-Resolution Iron Discrimination™

Provides fine resolution of iron discrimination (40 levels) for the most precise ability to separate a good target from iron trash.

### • Iron Audio™

Allows the user to hear discriminated iron (normally silenced) to avoid digging tricky, undesired flat iron objects (i.e. bottle caps, steel washers) and to alter the detector's mid-tone signal's range.

### • Digital Target ID

Numeric scale from 0 to 99; indicates a target metal's conductivity for increased ability to distinguish targets from each other.

### • Fast Track™ Ground Balance

Automatic feature that allows the user to quickly ground balance the detector in mineralized soil conditions.

### • Ground Balance (Manual)

Allows the operator to manually adjust the detector's ground balance to reduce the detrimental effects of ground mineralization.

### • Pinpoint

This non-motion All-Metal Mode function is used to precisely locate a detected target in the ground.

### • Fast Recovery Speed

Allows greater ability to pick out good targets amongst trash.

### • One-Touch™ Treasure Hunting

With one touch of a button, your detector is: powered on; automatically reset to factory (or your) settings; and ready to search!

**More Info:** Continuous coin depth indicator to help determine target depth. Battery condition indicator. Graphic Target Analyzer identifies target conductivity. Adjustable Frequency helps eliminate interference.

AT Pro International



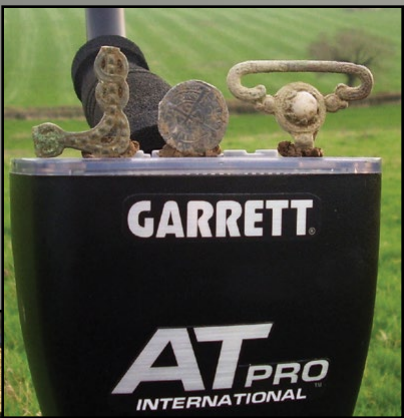
# READY FOR ALL TERRAIN—WATERPROOF TO 10 FEET

8.5" x 11" **PROformance™**  
DD searchcoil included




*MS-2 headphones included*

See page 15 for interchangeable AT Pro International searchcoils.



**From  
the Field**

Real customer finds  
made with the AT Pro International [garrett.com](http://garrett.com) 

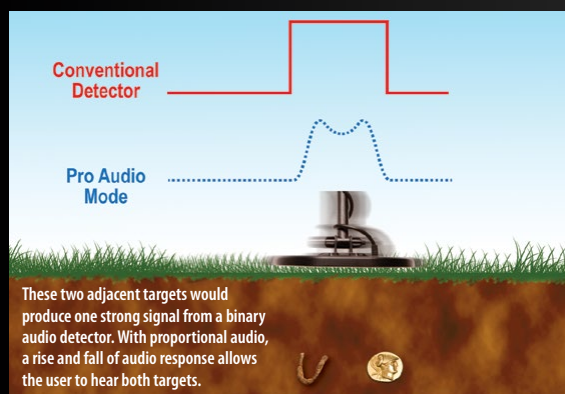


# TECHNOLOGY, FEATURES: AT Max, Gold, Pro

## PROPORTIONAL AUDIO FEATURE

The *AT Max*, *AT Gold*, and *AT Pro* each feature advanced, proportional (Pro) audio modes. This allows the user to hear subtle changes in a target's response. Proportional audio also helps the user to better judge a target's size, shape and depth and has the additional benefit of a much faster recovery time when detecting adjacent targets.

The *AT Pro* also includes three Standard audio modes, which provide a full-strength beep regardless of a target's amplitude. Many detectorists prefer this simpler, binary (either on or off) target response.



## HIGH-RES IRON DISCRIMINATION™

With adjustable levels of iron discrimination (40 points on the *AT Pro* and 44 points on the *AT Gold* and *AT Max*), the user can apply only the minimal amount of discrim needed to reject iron trash targets. The detector will continue to find desirable targets that might otherwise have been “masked” by iron.



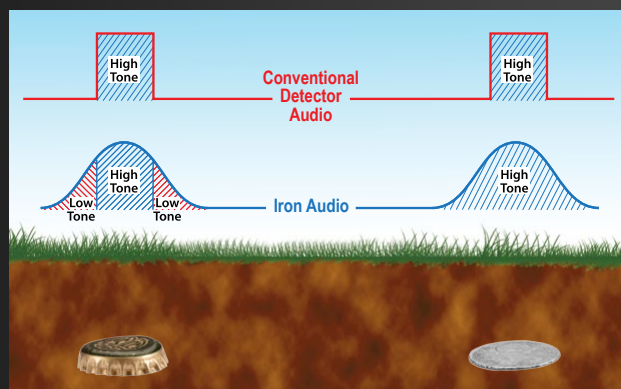
## DIGITAL TARGET ID (0 TO 99 SCALE)

This scale on the LCD screen helps to more precisely identify buried targets. Items with a value near 1 are the most ferrous, while the most conductive targets (such as thick silver) register closer to 99 on the Digital Target ID.

## IRON AUDIO™ AND ALL-METAL IRON AUDIO

Iron objects can mask good targets or create “ghost signals” that appear to be good. Garrett's selectable Iron Audio feature allows the user to hear discriminated iron (normally silenced) to help avoid being tricked into digging an undesired target.

For many detectors, bottle caps, steel washers, etc. sound like good targets, producing a high tone response. The bottle cap's shape and flat surface resembles a coin, which tricks the detector. With Iron Audio however, the bottle cap will produce a very distinctive response with multiple tones, compared with a coin's high-tone response.



The *AT Max* and *AT Gold* also feature All-Metal Iron Audio to identify problematic iron targets while in a True All-Metal Mode, another Garrett exclusive!

## TONE ROLL AUDIO™

Provides more audible target information to help identify targets, particularly iron. Detectors with binary audio produce a single target tone based on the target's strongest signal. Tone Roll audio provides a variance of target tones as the searchcoil approaches, passes above and departs from a target. These varying phases provide better overall target information.

## ADJUSTABLE THRESHOLD

This *AT Max* and *AT Gold* feature allows the user to select 33 levels of constant background audio (“hum”). By operating with a barely audible threshold level, this feature helps to maximize the user's ability to hear faint signals thereby maximizing detection depth.



The *AT Pro* and *AT Max* will also ground balance to saltwater.



The *AT Gold* is designed for use in freshwater.

**AT Gold Tip:** Try Disc 2 to improve detector's performance if using the *AT Gold* for saltwater hunting.

## ALL-TERRAIN VERSATILITY

Garrett *AT* detectors are engineered with waterproof housings and connectors to protect in dusty, muddy, wet and humid environments. They can be submerged to a 10-foot depth (maximum).

*Note:* Waterproof headphones must be used if the headphones are submerged in water. The standard headphones provided with the *AT Pro*, *AT Gold*, and *AT Max* cannot be submerged, however the cord leading to the headset is submersible.

## GROUND BALANCE OPTIONS

Each *AT* detector has both manual and automatic ground balance features to allow the user to reduce the detrimental effects of ground mineralization. The *AT Gold* additionally offers Ground Balance Window, a Garrett exclusive feature allowing the user to simultaneously ground balance to a range of values. This smooths out the All Metal Audio by reducing the subtle ground responses and allows the user to better hear faint target signals.

The *AT Max* has the most advanced ground balance features, including Automatic Ground Balance Window™—in which the detector automatically spreads the ground balance where needed.





## WHICH GARRETT ALL-TERRAIN DETECTOR IS BEST FOR YOU?

**AT Max**—Offers the deepest detection, True All Metal Mode, and wireless capability. Recommended for all terrains, including both salt and freshwater environments. Use for coins, jewelry, relics, gold, and competition hunts.

**AT Gold**—Its higher frequency, True All Metal Mode, and small searchcoil make it hot on tiny gold nuggets, relics, and small jewelry. Its advanced ground balance features make it ideal for prospecting and freshwater hunting.

**AT Pro**—Choose from easy-to-learn Standard Modes or advanced Pro Modes for more target information and depth. Can be submerged in either saltwater or freshwater. Great for coins, jewelry, relics, and gold.

COMPARISON CHART	<b>AT MAX</b>	<b>AT GOLD</b>	<b>AT PRO</b> INTERNATIONAL
Z-Lynk™ Wireless (integrated)	✓ (With MS-3 Z-Lynk headphones included)	No	No
Iron Discrimination Segments	44	44	40
True All-Metal Mode	✓	✓	No
Backlight	✓	No	No
Volume Adjustment	✓	No	No
Notch Discrimination	Adjustable	Preset (fixed)	Adjustable
Search Modes	4, all Pro Audio	3, all Pro Audio	6 (3 Standard, 3 Pro)
Proportional Audio	✓	✓	✓
Standard Binary Audio	No	No	✓
Fast Recovery Speed	✓	✓	✓
Sensitivity/ Depth Adjustments	8	8	8
Iron Audio™ (Disc. Modes)	✓	✓	✓
Iron Audio™ (All Metal Mode)	✓	✓	No
Threshold Adjustment	✓	✓	No
Digital Target ID	✓	✓	✓
Ground Balance, Auto/Manual	✓	✓	✓
Ground Balance Window™	✓ (Automatic)	✓	No
Pinpoint	✓	✓	✓
Waterproof to 10 feet (3m)	✓	✓	✓
• Freshwater use	✓	✓	✓
• Saltwater use	✓	not recommended	✓
Frequency	13.6 kHz, adjustable	18 kHz, adjustable	15 kHz, adjustable
Audio Tone ID Levels	3	3	3
Target Depth Indicator	✓	✓	✓
Standard Searchcoil	8.5" x 11" DD <b>PROformance™</b>	5" x 8" DD <b>PROformance™</b>	8.5" x 11" DD <b>PROformance™</b>
Length (Adjustable)	43" to 56" (1.09m - 1.4m)	43" to 56" (1.09m - 1.4m)	43" to 56" (1.09m - 1.4m)
Total Weight	3.03 lbs (1.4 kgs)	2.8 lbs (1.27 kgs)	3.03 lbs (1.4 kgs)
Batteries	4 AA (included)	4 AA (included)	4 AA (included)
Battery Condition Indicator	✓	✓	✓
Warranty	2 Years	2 Years	2 Years

## AT ACCESSORIES

### SEARCHCOILS



9" x 12" **PROformance™** concentric searchcoil  
PN: 2222700



8.5" x 11" **PROformance™** DD searchcoil  
(Standard on AT Pro)  
PN: 2222400



6.5" x 9" **PROformance™** concentric searchcoil  
PN: 2222600



5" x 8" **PROformance™** DD searchcoil  
(Standard on AT Gold)  
PN: 2222800



4.5" **AT SuperSniper™** searchcoil  
PN: 2222500

### AT CAPS



**AT Max cap**  
PN: 1664600



**AT Pro Camo Cap**  
PN: 1633400



**AT Gold Camo Cap**  
PN: 1664100





## TREASURE FOUND BY GARRETT **ACE** USERS

From scenic mountaintops above an ancient village to an old homesite, Garrett ACE users have unearthed some truly amazing finds. No matter where you search, you can put your trust in Garrett's ACE detectors to help you discover your own treasures.



Finder: Donald R., Florida  
Using: ACE 300  
Find: Two-ring bridal set and a .925 silver ring



Finder: Drew M., United Kingdom  
Using: ACE 400i  
Find: Early Bronze age long flanged axe head, circa 1750–1550 BC



Finder: Jasja H., Europe  
Using: ACE 300i  
Find: 1704 silver gulden



Finder: Josh E., Florida  
Using: ACE 300  
Find: 1857-0 Seated Liberty half dime



Finder: Miguel A., Texas  
Using: ACE 200  
Find: World War II-era military hat badge



Finder: Michael B., North Carolina  
Using: ACE 400  
Find: Five Silver dimes and a silver ring

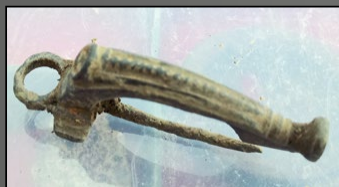


Finder: Joe D., United Kingdom  
Using: ACE 400i  
Find: 3rd century hoard of 1,377 Roman coins



Finder: Lucien L., Europe  
Using: ACE 300i  
Find: 170 World War II-era German Iron Crosses





Finder: Steve E., United Kingdom  
Using: ACE 400i  
Find: Roman headstud brooch, circa 1st century AD



Finder: Eric S., New Jersey  
Using: ACE 400  
Find: 1787 New Jersey colonial copper coin



Finder: Chris O., New York  
Using: ACE 400  
Find: 1902 silver Barber quarter



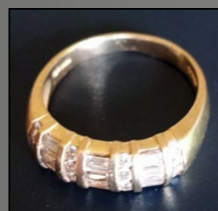
Finder: Dejan S., Europe  
Using: ACE 300i  
Find: Silver Celtic coin, circa 2nd century BC



Finder: Kristoffer J., Europe  
Using: ACE 400i  
Find: Collection of modern coin finds



Finder: Simon M., United Kingdom  
Using: ACE 400i  
Find: 1421 Henry VI gold noble coin



Finder: Glenn W., Missouri  
Using: ACE 300  
Find: 14k gold ring with 16 diamonds



Finder: Laura H., United Kingdom  
Using: ACE 300i  
Find: 1881 silver florin



Finder: Eddy F., California  
Using: ACE 400  
Find: Military badges and buttons



# ACE<sup>TM</sup> 400i

PN: 1141560  
batteries included



*\*Shown with optional MS3 Z-Lynk wireless kit*



## ACE<sup>TM</sup> 400i

### All Purpose Versatility

With Digital Target ID and Iron Audio, the ACE 400i is powerful on coins, jewelry, and artifacts!

#### • Iron Audio™

Allows the user to hear discriminated iron (normally silenced) to avoid digging tricky, undesired flat iron objects (i.e. bottle caps, steel washers) and to alter the detector's mid-tone signal's range.

#### • 10 kHz Frequency

Higher frequency provides better sensitivity on low and medium-conductivity targets (i.e. gold, lead).\*

#### • Digital Target ID

Numeric scale from 0 to 99; indicates a target's conductivity for increased ability to distinguish targets from each other.

#### • Pulse Width Modulation Audio

Provides sharp, responsive target signals.

#### • Enhanced Iron Resolution™

Increased resolution (more pixels\*) allows more precise control of how much iron discrimination to apply. This feature is particularly useful in areas where desirable treasure targets are being masked by iron trash.

#### • Adjustable Frequency

Helps eliminate or minimize interference caused by electrical sources or by other metal detectors.

#### • Notch Discrimination

Modify discrim patterns for what you seek.

#### Other features:

• **Pinpoint** This non-motion All-Metal function is used to precisely locate a detected target in the ground.

• **Camlocks** for increased stem stability.

#### • Eight (8) Sensitivity/Depth Adjustments

#### • Five Search Modes plus Pinpoint

#### • One-Touch™ Treasure Hunting

With one touch of a button, your detector is: powered on; automatically reset to factory (or your) settings; and ready to search!

#### • Three FREE accessories included with purchase!

**More Info:** Continuous coin depth indicator to help determine target depth. Battery condition indicator. Graphic Target Analyzer identifies target's conductivity. Can be disassembled into three pieces for storage / travel.

\* Compared to previous ACE 350 model.

ACE 400i



# THE NEW “KING” OF ACES

8.5" x 11" **PROformance™**  
DD searchcoil included

**FREE ACCESSORIES:** (included with purchase)  
Garrett ClearSound Easy Stow  
Headphones, ACE Environmental  
Cover-Up, and searchcoil cover



See page 24 for interchangeable ACE searchcoils.





# ACE 300i

PN: 1141450  
batteries included



# ACE 300i

## Big Features, Unbeatable Price

Excellent detection depth, rugged design, and easy to operate!

### • Digital Target ID

Numeric scale from 0 to 99; indicates a target's conductivity for increased ability to distinguish targets from each other.

### • Adjustable Frequency

Helps eliminate or minimize interference caused by electrical sources or by other metal detectors.

### • Enhanced Iron Resolution™

Increased resolution (more pixels\*) allows more precise control of how much iron discrimination to apply. This feature is particularly useful in areas where desirable treasure targets are being masked by iron trash.

### • 8 kHz Frequency

Higher frequency provides better sensitivity on low and medium-conductivity targets (i.e. gold, lead).\*

### • Pulse Width Modulation Audio

Provides sharp, responsive target signals.

### • 7"x10" elliptical searchcoil

Offers more coverage, depth.\*

### • Notch Discrimination

Modify discrim patterns for what you seek.

#### Other features:

- **Pinpoint** This non-motion All-Metal function is used to precisely locate a detected target in the ground.
- **Camlocks** for increased stem stability.
- **Eight (8) Sensitivity/Depth Adjustments**

### • Five Search Modes plus Pinpoint

### • One-Touch™ Treasure Hunting

With one touch of a button, your detector is powered on, automatically reset to factory (or your) settings, and ready to search!

### • Three FREE accessories included with purchase!

**More Info:** Continuous coin depth indicator to help determine target depth. Battery condition indicator. Graphic Target Analyzer identifies target's conductivity. Can be disassembled into three pieces for storage / travel.

\* Compared to previous ACE 250 model.

ACE 300i



# SO POWERFUL, SO AFFORDABLE, SO LEADER OF ITS CLASS



7" x 10" **PROformance™**  
concentric searchcoil included

## **FREE ACCESSORIES:** (included with purchase)

Garrett ClearSound Easy Stow  
Headphones, ACE Environmental  
Cover-Up, and searchcoil cover

See page 24 for interchangeable ACE searchcoils.



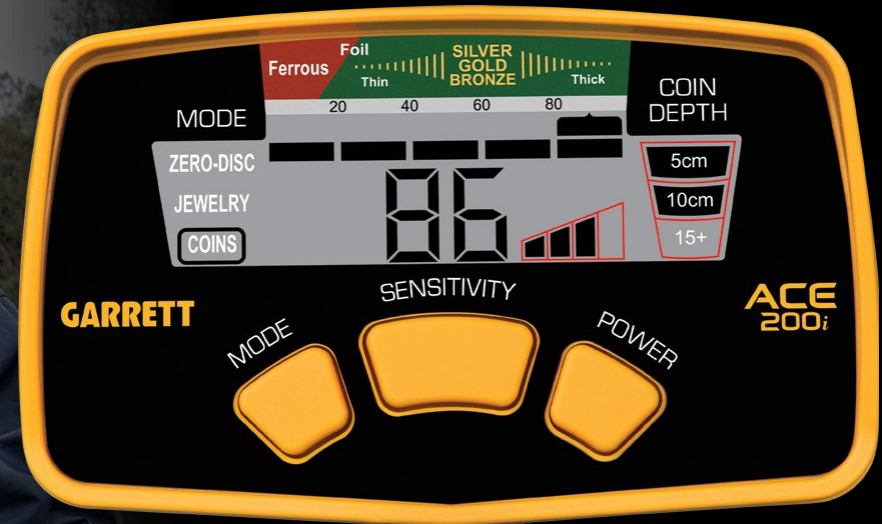
## ***From the Field***





# ACE<sup>™</sup> 200i

PN: 1141370  
batteries included



*Junior stem kit assembly is  
available for ACE detectors.  
See page 24.*

## ACE<sup>™</sup> 200i

- **Digital Target ID**  
Numeric scale from 0 to 99; indicates a target's conductivity for increased ability to distinguish targets from each other.
- **Pulse Width Modulation Audio**  
Provides sharp, responsive target signals.
- **Three Search Modes**
- **Coin Depth Indicator** helps determines target depth.
- **Camlocks** for increased stem stability
- **Four Sensitivity adjustments**
- **Low Battery Indicator**
- **Disassembles** into three pieces for storage/travel.
- **6.5" x 9" PROformance searchcoil included**

## Lightweight and Easy to Learn

Powerful, entry-level detector with One-Touch operation.  
Turn on and begin finding treasure!



**From the Field**



ACE 200i



# ACE OVERVIEW AND APPLICATIONS

## ACE 400i:

The top of the ACE family, the 400i has new Iron Audio feature, a powerful DD coil, a higher frequency, and volume control headphones.

**Ideal for:** Coins, jewelry, relics, dry beach, fresh water wading, competition events, cache hunting, and it has improved features for prospecting.

## ACE 300i:

A powerful performer at a bargain price. The ACE 300i has more modes than an ACE 200i and enhanced features to help find more treasure.

**Ideal for:** Coins, jewelry, relics, dry beach, fresh water wading and competition events. Can be used for entry-level prospecting or cache hunting.

## ACE 200i:

Light weight, powerful, entry-level detector that's easy to learn. Simple One-Touch operation; turn on and begin hunting!

**Ideal for:** Coins, jewelry, dry beach and fresh water wading. Can also be used for entry-level prospecting and relic hunting.

### TECHNICAL SPECIFICATIONS: Garrett ACE Detectors

COMPARISON CHART	ACE <sup>™</sup> 400i	ACE <sup>™</sup> 300i	ACE <sup>™</sup> 200i
Digital Target ID (0 to 99 scale)	✓	✓	✓
Iron Discrimination Segments	4	4	1
Notch Discrimination	Adjustable	Adjustable	Fixed
One-Touch Treasure Hunting	✓	✓	✓
Search Modes	5 (Plus Pinpoint)	5 (Plus Pinpoint)	3
Sensitivity/ Depth Adjustments	8	8	4
Pinpoint	✓	✓	No
Frequency	10 kHz, adjustable	8 kHz, adjustable	6.5 kHz, fixed
Camlocks for more stem stability	✓	✓	✓
Audio Tone ID Levels	3	3	3
Iron Audio <sup>™</sup>	✓	No	No
Target Depth Indicator	✓	✓	✓
Battery Condition Indicator	✓	✓	✓
Standard Searchcoil	8.5" x 11" DD PROformance <sup>™</sup>	7" x 10" concentric PROformance <sup>™</sup>	6.5" x 9" concentric PROformance <sup>™</sup>
Headphones Included	✓	✓	No
Length (Adjustable)	40" to 53" (1.06m - 1.29m)	40" to 53" (1.06m - 1.29m)	40" to 53" (1.06m - 1.29m)
Total Weight	2.9 lbs (1.32 kgs)	2.8 lbs (1.27 kgs)	2.75 lbs (1.25 kgs)
Batteries	4 AA (included)	4 AA (included)	4 AA (included)
Warranty	2 Year, Limited Parts/Labor	2 Year, Limited Parts/Labor	2 Year, Limited Parts/Labor
What Else is in the Box?	Easy Stow headphones, ACE cover-up, coil cover, manual	Easy Stow headphones, ACE cover-up, coil cover, manual	Owner's manual

See pg. 24 for interchangeable ACE searchcoils.





These items are made specifically for *ACE* series detectors. For other bags, packs, recovery tools, and accessories, see pages 44–47.

## SEARCHCOILS



**9" x 12" PROformance concentric searchcoil**  
PN: 2221900



**8.5" x 11" PROformance DD searchcoil**  
(standard on ACE 400i)  
PN: 2222000



**7" x 10" PROformance concentric searchcoil**  
(standard on ACE 300i)  
PN: 2223200



**6.5" x 9" PROformance concentric searchcoil**  
(standard on ACE 200i)  
PN: 2221700



**5" x 8" PROformance DD searchcoil**  
PN: 2223000



**4.5" ACE Super Sniper searchcoil**  
PN: 2221800

## OPTIONAL STEM ASSEMBLIES



**Black Middle Stem with Camlocks**  
PN: 2347500



**Junior Stem Kit Assembly** This shorter stem set is easily installed to make your *ACE* a better fit for a child. Includes coil mounting hardware.  
PN: 2235100

## ACE LOGO APPAREL

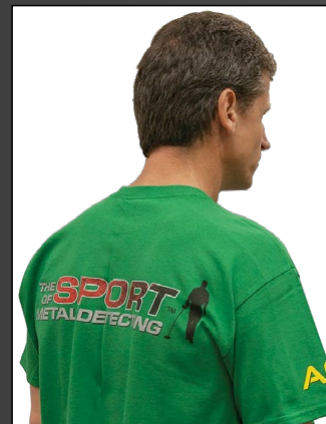
**Garrett "ACE" Cap** 100% cotton, embroidered.  
One size fits most with Velcro strap.  
PN: 1664400



**Garrett "ACE Sport of Metal Detecting" Shirt**  
Pre-shrunk, 100% cotton.  
PN: 16215xx S-XL  
2XL-3XL



(Logo on front right side)



**Searchcoil Tip:** The *Super Sniper* searchcoil is an ideal optional accessory for any detector if you plan to search for targets in tight areas—such as among roots, rocks or even under playground equipment.

## PROTECTIVE COVER-UP



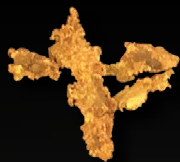
**ACE cover-up** easily installs to protect your metal detector from the weather and dirt.  
PN: 1619900







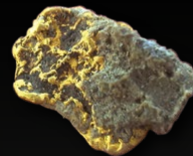
Finder: Gerd M., Europe  
Using: ACE 250  
Find: Middle Bronze Age bracelet (circa 1500 B.C.)



Finder: Orthan E., Africa  
Using: ATX  
Find: Gold nugget



Finder: Craig W., Virginia  
Using: ACE 350  
Find: Tongue of a two-piece Confederate belt plate



Finder: Vyacheslav K., Taraz, Kazakhstan  
Using: AT Gold  
Find: .6-gram gold nugget



Finder: Rafal S., Europe  
Using: ACE 150  
Find: 1458 Grand master of Johan Von Tiffen silver penny



Finder: Walter H., Arizona  
Using: AT Pro  
Find: 14k gold ring containing five diamonds



Finder: Wayne C., New Hampshire  
Using: AT Pro  
Find: 1828 silver Capped Bust quarter



Finder: Ole B., Europe  
Using: AT Pro International  
Find: Silver Viking age fibula (circa 1000-1500 AD)



Finder: Jason M., United Kingdom  
Using: AT Pro International  
Find: Rare 40 AD Celtic gold stater



Finder: Rune N., Europe  
Using: AT Gold  
Find: Viking fibula brooch from the 6th Century



Finder: Julien R., Europe  
Using: ACE 250  
Find: 500 BC Celtiberian plate, bronze with gold finish



Finder: Savvus C., United Kingdom  
Using: AT Gold  
Find: Silver Roman denarius coin (ca. 64-64 AD) of Nero Caesar Augustus

## WE CELEBRATE YOUR FINDS WITH YOU

Since 1964, the Garrett family has enjoyed helping our customers to find more treasure.



Eleanor Garrett and her son Vaughan share treasure stories with local detectorists who stopped by the Garrett Museum to show some of their detecting finds.

### IT'S WHAT GOT OUR FOUNDERS STARTED.

Charles and Eleanor Garrett founded Garrett Metal Detectors in 1964. Their original goal was to build a better metal detector than what Charles had been able to purchase for his own use on the market.

Today, Garrett Metal Detectors still stands for high quality technology, made available at fair prices and with the best possible customer service.

During his life, Charles Garrett was always thrilled to see the many finds his customers discovered with Garrett detectors—silver, gold, old coins, battlefield relics, jewelry, and caches of treasure. His son, Vaughan Garrett, continues to look at the favorite finds submitted to the company, and even awards prizes to his personal favorites each month (see the back cover for details on this).



Charles Garrett and his son Vaughan hold some of the Roman and Greek coins they found together on a detecting trip.



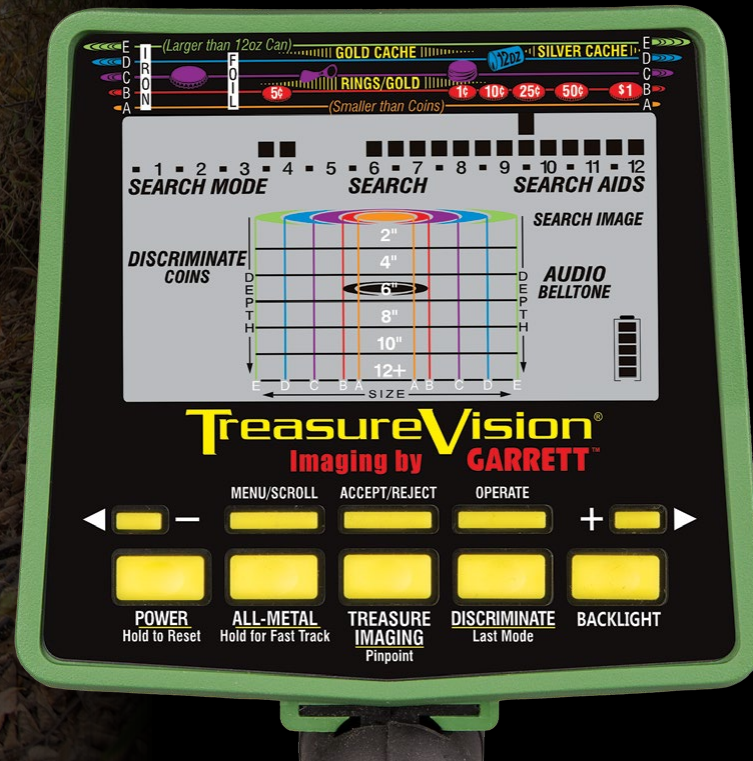
Charles Garrett searching for treasure with one of his early detectors in the early 1970s.

All Garrett detectors  
are proudly  
**MADE IN AMERICA**



# GTI<sup>™</sup> 2500

PN: 1120570  
batteries included



# GTI<sup>™</sup> 2500

## See a Target's Size and Depth!

Spend less time digging trash and more time digging treasure.

- **Graphic Target Imaging™ (GTI)**  
Garrett Exclusive feature that shows true target size (5 size options) and depth.
- **All Metal, Non-Motion Deepseeking Mode**  
Provides greatest possible detection depth and sensitivity.
- **Ground Balance**  
Automatic and Manually Adjustable. Also: FastTrack™ Ground Balance, for use in All-Metal Mode.
- **Backlight**  
Illuminates LCD screen for improved visibility.

### 6 Search Modes (Discrim Patterns)

All-Metal, Zero, Jewelry, Custom, Relics, Coins, plus electronic Pinpointing

### • ScanTrack™ Optimization

Garrett's circuitry automatically adjusts to produce peak audio signals on every detected target regardless of whether the user's searchcoil swing speed is slower or faster than optimum.

### • Automatic Ground Tracking

Detector automatically adjusts itself to ground mineralization for optimum performance.

### • Salt Elimination Aid

Helps eliminate interference caused by wet sand at the beach.

#### Other features:

### • Surface Elimination Aid

Adjustable search aid helps ignore shallow items.

### • Last Mode Switching

Switch from All-Metal into last-used Discrim Mode to quickly check a target.

### • Hip Mount Battery Pack

Reduces detector weight for long searches.

### • User Adjustable Controls

Threshold, Volume, Tone, Sensitivity, and Discrimination

GTI 2500



# KNOW THE SIZE OF A TARGET BEFORE YOU DIG



9.5" PROformance™ Imaging searchcoil included



## From the Field



Hoard of 4th century Roman silver coins found by Ovidiu P. of Romania with his GTI 2500.





# GTI SEARCHCOILS & ACCESSORIES



**12.5" PROformance™  
Imaging Searchcoil**  
PN: 2220000



**9.5" PROformance™  
Imaging Searchcoil**  
(Standard on GTI 2500)  
PN: 2220200



**10" x 14" PROformance™  
Power DD Searchcoil**  
PN: 2217300



**8.5" x 11" PROformance™  
DD Searchcoil**  
PN: 2222200



**5" x 8" PROformance™  
DD Searchcoil**  
PN: 2222900



**5" x 10" Scorchers™  
DD Searchcoil**  
PN: 2219800



**4.5" Super Sniper™  
Searchcoil**  
PN: 2219700



See pg. 43 for  
Depth Multiplier  
options

## OPTIONAL CAMLOCK STEM

Black Middle Stem with Camlocks  
PN: 2347500



## ENVIRONMENTAL COVER-UP

Our GTI cover-up is easily installed to protect your metal detector from the weather and dirt.  
PN: 1618200



Garrett's true-size imaging gives target sizes ranging from A (smaller than a coin) to E (larger than a soda can).



A A  
Smaller than coins



B B  
Coins



C C  
Larger than coins



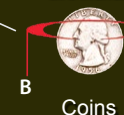
D D  
Drink can size



E E  
Large treasures

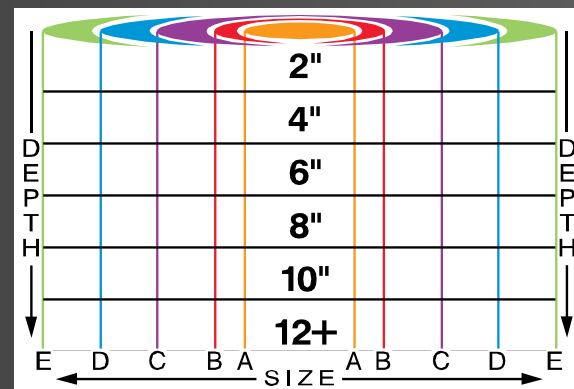


Target ID indicates a U.S. quarter. TreasureVision® display shows target as Size B (coin) and depth at 6 inches.



B B  
Coins

Garrett's exclusive Graphic Target Imaging (GTI) shows actual SIZE and DEPTH of a target!



## GTI 2500 PRO-PACKAGE

PN: 1120580

Includes the GTI 2500 Metal Detector with a 9.5" Imaging coil plus FIVE accessories:

12.5" PROformance Imaging Searchcoil  
MS-2 Headphones  
Soft Case, Universal Detector Bag (camo)  
GTI Environmental Cover-up  
Treasure Quest

PN: 2220000  
PN: 1627300  
PN: 1616901  
PN: 1618200  
PN: 1510100

(Savings based on total cost of items if purchased separately.)

GTI 2500 Pro-Package





# PULSE INDUCTION (PI) DETECTORS

Recommended for heavily mineralized ground and saltwater environments



## Advantages of PI Detectors

Pulse detectors provide the best performance over mineralized ground and in saltwater environments due to their ability to ignore minerals by virtue of their pulse characteristics.

## Iron Check Techniques

To help determine if a target is ferrous (iron), some users employ a reverse discrimination technique to check the item. With either Garrett pulse detector, simply increase Discrimination to maximum. If the target still produces a substantial signal, there is a good chance it is iron.

The Garrett ATX additionally offers a true Iron Check feature that produce a low-tone growl sound (Iron Audio) for many iron items (DD searchcoil required).

## Things to Know About Pulse Induction Detectors:

- Pulse induction metal detectors are also commonly referred to as multiple frequency detectors.
- Target ID capabilities are reduced or nonexistent as compared to a VLF detector.
- Less energy efficient than VLF detectors, requiring more batteries and/or more frequent battery changes.

- More susceptible to external noise (EMI) and interference.

## Saltwater Tips

All PI detectors cancel most of the saltwater response by nature of their operation. In some of the more challenging saltwater environments when operating a Garrett *Sea Hunter*, you can add a small amount of Discrimination (or Delay) to cancel out the remaining saltwater response. With a Garrett ATX, however, it can be quickly ground balanced to the saltwater to provide the smoothest audio threshold and performance.



**ATX**™ EXTREME PULSE INDUCTION

### 3 Standard coil options

PN: 1140860 ATX with 10" X 12" DD open coil  
PN: 1140870 ATX with 11" X 13" DD closed coil  
PN: 1140880 ATX with 11" X 13" Mono closed coil

**Easy Access Adjustments**  
Single push-button controls for Sensitivity, Discrimination, Threshold, Volume, Ground Track, Frequency Scan, and more can be adjusted with one hand.



**ATX**™ EXTREME PULSE INDUCTION

## High-End, All-Terrain Pulse Performance

Highly sensitive on tiny gold and extends depth in the most extreme mineralized soils.

- **Maximum Detection on all targets** at the same time. No need to switch modes to enhance detection of one target while degrading another.
- **Advanced Ground Balance** Has wide range to ground balance from heavily mineralized ground (ironstone) to saltwater without switching to special modes.
- **Quick Iron Check feature** Allows the operator to audibly identify iron targets when using a DD searchcoil.
- **Quickly and Fully Collapsible**
- **Rugged military-spec design**
- **Motion and Non-Motion Modes** Provides optimum performance based on your hunting preference and conditions.
- **All Terrain use:** Weatherproof design for dusty, humid, or wet environments; and fully submersible to 10-foot depth.
- **Adjustable Sensitivity, Discrimination, Volume, and Frequency Scan** Each can be adjusted with one hand.
- **Ground Track (Automatic)** Choose from four tracking speeds to have the ATX continuously measure ground mineralization and automatically adjust itself for optimum performance.
- **Advanced DD searchcoil** Provides easy pinpointing and enhanced detection of small items without having to slow the scanning speed of the searchcoil.

### Adjustable Operating Lengths



ATX



# HUNT ONCE, GET IT ALL.

Find what the other detectors missed.

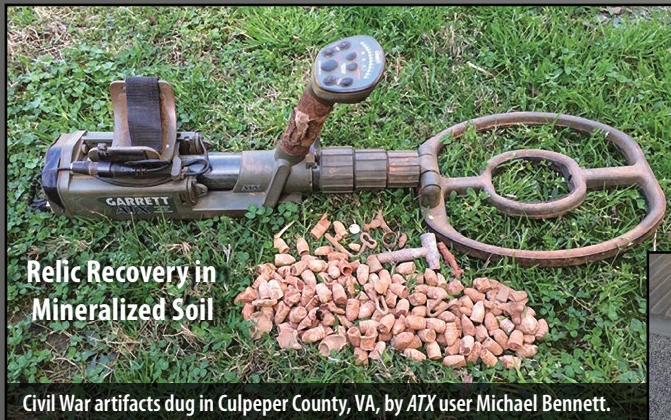


NQExplorers



## ATX includes:

MS-2 headphones, soft carry case,  
AA alkaline and rechargeable batteries,  
battery charger, coil cover, detector sling,  
and owner's manual



## Relic Recovery in Mineralized Soil

Civil War artifacts dug in Culpeper County, VA, by ATX user Michael Bennett.

20 ounces of gold nuggets and  
specimen recovered by Mark with  
his ATX in Western Australia.



## Extreme Detection



Four nuggets, as small as 0.12 grams and 0.26 grams,  
found by Steve H. of Reno, NV with his ATX.

garrett.com



## ATX SEARCHCOILS



**DeepSeeker 15" x 20" (38cm x 50cm) Mono Searchcoil**  
Use for locating larger and more deeply buried objects. Includes surface debris elimination.  
PN: 2234100



**11" x 13" (28cm x 33cm) Mono/DD Closed Searchcoils**  
Closed coil design easily slides over rough ground/vegetation; more resistant to impacts; ideal for prospecting. Exclusive sliding-mount allows center-mount for balanced operation and rear-mount for compact storage. Includes coil cover.  
Mono version, PN: 2235200  
DD version, PN: 2235300



**10" x 12" (25cm x 31cm) DD Open Design Searchcoil**  
Excellent detection on large and small targets. Open design is ideal for water hunting.  
PN: 2234600



**8" (20cm) Mono Searchcoil**  
Excellent depth on small targets. Enhanced maneuverability in tight areas.  
PN: 2234000



**11" x 13" Mono/DD Coil Covers**  
Provides solid protection for searching rocky areas. (Same cover fits either Mono or DD coil.)  
PN: 9883600



**15" x 20" Mono Closed Coil Cover**  
Provides solid protection for searching rocky areas.  
PN: 1608300



**15" x 20" Mono Open Coil Cover**  
Maintains visibility; collects less sand and sediment, and is lighter weight than a closed cover.  
PN: 1608200



**10" x 12" DD Closed Coil Cover**  
Provides solid protection for searching rocky areas. Bottom side of solid coil cover can be used to help locate tiny gold pieces.  
PN: 1607600



**10" x 12" DD Open Coil Cover**  
Maintains visibility; collects less sand and sediment; lighter weight; more maneuverable underwater than a closed cover.  
PN: 1607500



**8" Mono Closed Coil Cover**  
Provides solid protection for searching rocky areas. Bottom of solid coil cover can be used to help locate tiny gold pieces.  
PN: 1607700

## ATX ACCESSORIES



**Garrett ATX Hard Case**  
Military-grade design. Holds ATX, soft case, and accessory searchcoils.  
PN: 1626500



**ATX Shaft Nut Spanner Wrench**  
Use for removing camlocks on ATX stems for thorough interior cleaning of assembly.  
PN: 1625200



**ATX Camo Cap**  
PN: 1664200

## ATX™ DEEPSEEKER PACKAGE

Find deeply buried objects, large gold, caches, relics and more with the oversized ATX DeepSeeker searchcoil. Buy the package and save money—plus get a free hard case!



PN: 1140820—10"x12" DD Coil Package  
PN: 1140840—11" x 13" Mono Coil Package  
PN: 1140830—11" x 13" DD Coil Package

### Includes:

- ATX with your choice coil
- Soft carry case
- Battery charger
- MS-2 headphones
- AA alkaline and rechargeable batteries
- Coil covers

### PLUS:

- 15" x 20" Deepseeker mono searchcoil
- Military-grade hard case
- Detector sling

\* Savings based on actual cost of items if purchased separately.



Accessory items subject to change



# LEAVE YOUR LIMITS IN THE DUST

Garrett's pulse induction detectors are built tough, ready to take on whatever environmental challenges you encounter.

## TECHNICAL SPECIFICATIONS: Garrett PI Detectors

COMPARISON CHART	Sea Hunter <small>Mark II</small>	ATX™ <small>EXTREME PULSE INDUCTION</small>
Overview	Proven PI technology with 22 Frequencies. Ideal for saltwater hunting and wreck diving use.	Garrett's highest performance PI technology. Provides maximum sensitivity on all targets all the time. Easy access to all controls with one hand. Includes advanced features to overcome the most extreme environmental conditions.
Detection Performance	Good detection on all targets from jewelry to coins to nuggets.	Superior sensitivity on all targets, especially on small, low conductivity items (sub 0.1 gram nuggets, fine jewelry, etc.).
Ground Balance Capabilities	NO	YES. Fast Track
Balances to Saltwater	NO. Inherently immune to most saltwater; use Discrim if necessary.	YES. Inherently immune to most saltwater; use Ground Balance if needed.
FastTrack Ground Balance	NO	YES
Continuous GroundTrack	NO	4 settings: Off, Slow, Med, Fast
User Controls/Functions	Control knobs to alter Audio Threshold, Discrimination. Sensitivity/Depth adjustment is fixed.	LED indicators show signal strength, current settings. Easy push-button control to alter Audio Threshold (25 settings), Volume, Sensitivity (13 settings), Pinpoint, etc.
EMI Control	Good immunity in moderate EMI environments. No frequency adjustment available.	Excellent immunity in more severe EMI environments. Has push-button automatic frequency scan and selection to provide quietest operation.
Discrimination/Delay	Adjustable via control knob	25 settings, via push-button control
Iron Audio	NO	YES (Requires DD coil)
Search Modes	Two Trash Elim Modes (both Motion Modes)	Motion and Non-Motion Modes, plus Pinpoint
Submersion Depth	200 feet (65m)	10 feet (3m)
Headphones (Included)	Submersible	Standard land-use
Standard Searchcoil	8" Mono	10" x 12" DD
Length (Adjustable)	28" to 52" (.71m - 1.32m)	20" to 68" (.51m - 1.72m)
Total Weight	5.1 lbs (2.3 kgs) stem-mounted	6.9 lbs (3.13 kgs)
Batteries (included)	8 AA alkaline	8 AA alkaline, plus 8 AA rechargeables and charger
Warranty	1 Year, Limited Parts/Labor	2 Year, Limited Parts/Labor







# Sea Hunter<sup>™</sup> Mark II

PN: 1151970  
Batteries, hip mount holster, and belt assembly included

## Sea Hunter<sup>™</sup> Mark II

### Wreck Diving's Trusted Veteran

Recommended for saltwater environments

Sea Hunter Mark II

- **Superior Automatic Salt Elimination Ability**  
using Pulse Induction technology.
- **User Adjustable Controls**  
Elimination, Audio Threshold
- **Independently Sealed Battery Compartment**
- **Fully waterproof to 200 feet**
- **Two Discrimination Modes**  
Each offers varying levels of non-ferrous discrimination.

#### Standard Trash Elimination:

Provides the deepest possible detection; allows a very slow searchcoil sweep in areas with little trash.

#### Discrete Trash Elimination:

Use to eliminate most pull tabs and foil without significantly degrading sensitivity for rings, coins.



"It would appear that no ring is safe from the Sea Hunter Mark II" - David F.



The Sea Hunter can also be used in the hip mount configuration for surf and beach hunting.



# EXPLORE FOR TREASURE DOWN TO 200 FEET!



8" **PROformance™** mono searchcoil included



**INCLUDED:**  
Submersible Headphones



**OPTIONAL:**  
10" x 14" Mono Searchcoil  
PN: 2215300

Kristen M. examines a gold ring she located on a 300-year-old shipwreck site.



(Above) Some of the rings and jewelry found by John M. of Texas (seen at left) has discovered in lakes and rivers with his Sea Hunter.



# GARRETT PINPOINTERS OVERVIEW, APPLICATIONS

TECHNICAL SPECIFICATIONS: PRO-Pointer AT Z-Lynk vs PRO-Pointer AT vs PRO-Pointer II

COMPARISON CHART	<b>GARRETT</b> PRO-Pointer <sup>®</sup> AT <small>(Z-Lynk)</small>	<b>GARRETT</b> PRO-Pointer <sup>®</sup> AT	<b>GARRETT</b> PRO-Pointer <sup>®</sup> II
Z-Lynk Wireless Technology	✓	No	No
Proportional audio/vibration pulse for target indication	✓	✓	✓
Fully waterproof?	Yes, to 20 feet (6m). IP 68	Yes, to 20 feet (6m). IP 68	No. Weatherproof, splashproof. (IP 66)
360° side scan detection plus pinpointing tip	✓	✓	✓
Fast Retune (quick-press to shrink detection field)	✓	✓	Use quick Power off/on retune method
Adjustable sensitivity	✓	✓	No
Lost Pro-Pointer alarm	✓	✓	✓
Automatic power off	✓	✓	✓
Ruler with inch/cm markings	✓	✓	No
Lanyard attachment loop	✓	✓	✓
Automatic tuning at turn-on?	✓	✓	✓
Patented scraping blade	✓	✓	✓
LED light	✓	✓	✓
Operating Temperatures	-4°F (-20°C) to 130°F (54°C)	-4°F (-20°C) to 130°F (54°C)	-4°F (-20°C) to 130°F (54°C)
Total weight	6.5 oz. (0.2 kg) w/battery	6.5 oz. (0.2 kg) w/battery	6.5 oz. (0.2 kg) w/battery
Battery	9V (included)	9V (included)	9V (included)
Warranty	2 Year, Limited Parts/Labor	2 Year, Limited Parts/Labor	2 Year, Limited Parts/Labor
Web holster	Included	Included	Included

## Advantages of Pinpointers

Garrett's *PRO-Pointers* are miniature metal detectors that enable you to recover detected targets faster.

- Speed your target recovery; more time to detect!
- Accurately find small items and prevent digging large holes.
- Identify multiple targets in close proximity.
- Search in tight areas or use as a utility pinpointer to locate nails and metal wall studs in homes or to locate rebar, conduit, etc.

## Retuning for Environment and Targets

All of Garrett's *PRO-Pointers* are able to quickly tune out mineralized ground or saltwater. This retuning technique can also be used to narrow in on large targets and to help gauge a target's size/depth.

To retune the standard *PRO-Pointer II*, use a quick power off and on process to shrink the detection field. To tune out saltwater, wet sand or highly mineralized ground, hold the tip of the pinpointer to the water, sand or soil as you turn on the power—thus instantly adjusting the pinpointer to the environment.

Retuning either of the *PRO-Pointer AT* pinpointers is even faster. Simply quick-press the button for an instant retune.

## Things to Know About Pinpointers:

- Garrett's *PRO-Pointers* operate in an All-Metal Mode, meaning they will detect all ferrous and non-ferrous metals.
- Turn off your pinpointer after every use. It is designed to tune itself to its environment each time it is turned on.





**The Pro of *All Terrain* Pinpointers . . . is now *Wireless*!**

## **PRO-POINTER® AT**



**All Terrain Pinpointer**

PN: 1142200



## **PRO-POINTER® AT**



**All Terrain Pinpointer**

- **One-Press Syncing** to Garrett Z-Lynk wireless receivers.
- **Wireless Convenience:** Hear both detector and pinpointer alarms in your headphones, even in noisy environments (beach, high winds, congested urban areas, organized hunts).
- **Fast Retune:** Quick button-press instantly tunes out environment or narrows your detection field for precise pinpointing of larger targets.
- **Single-button operation** for Power, Retune, Sensitivity adjustment, and Silent Mode (vibration only).
- **Lost Pro-Pointer Alarm:** After 5 minutes with no button presses, the pinpointer emits periodic warning chirps.

**Fully waterproof to 20 feet (6 meters)\***

- **Automatic power off** after one hour of warning chirps; saves batteries.
- **Patented proportional audio/vibration**
- **Patented scraping blade** for searching soil.
- **Lanyard attachment loop** allows *Pro-Pointer AT* to be attached to your belt, digging pouch or metal detector.
- **LED flashlight** for low light searches.
- **Woven belt holster, 9-volt battery included**
- **Ruler in inches and centimeters** molded into side of pinpointer to judge target depth.



\* Radio signals do not transmit through water, so when hunting fully submerged, you must rely upon the *Pro-Pointer*'s vibration and audio alerts without the benefit of headphones.



**SUBMERSIBLE TO 20 FEET!**

## **GARRETT** **PRO-POINTER® AT**

PN: 1140900



Fast retune feature quickly tunes out mineralized ground, salt, and other challenging environments.



## **GARRETT** **PRO-POINTER® AT**

- **Fully waterproof to 20 feet** with orange color for added visibility underwater.
- **Maximum Sensitivity** for improved detection of nuggets and other small targets. Choose from three Sensitivity levels.
- **Simple, single-button operation** for Power, Retune, Sensitivity adjustment, and Silent Mode (vibrate only).
- **Fast Retune:** Quick button press instantly tunes out environment or narrows detection field for precise pinpointing of larger targets.
- **Lost Pro-Pointer Alarm:** After 5 minutes with no button presses, the pinpointer emits periodic warning chirps.
- **Automatic power off** after one hour of warning chirps; saves batteries.
- **Patented proportional audio/vibration**
- **Patented scraping blade** for searching soil.
- **Lanyard attachment loop** allows Pro-Pointer AT to be attached to your belt, digging pouch or metal detector.
- **Bright LED** for low light searches.
- **Woven belt holster, 9-volt battery included**
- **Ruler in inches and centimeters** molded into side of pinpointer to judge target depth.





# RECOVER TARGETS FASTER!

## GARRETT® PRO-POINTER® II

PN: 1166050



The *Pro-Pointer II* features a patented scraping blade for searching sand, soil or gravel.



## GARRETT® PRO-POINTER® II

- **Faster retuning capability\***

Fast on/off cycles allow users to quickly tune out the detection of saltwater, wet sand, or highly mineralized ground.

- **Increased durability and sensitivity\***

- **Lost Pro-Pointer Alarm:**

Emits warning chirp for 60 minutes if left on more than 5 minutes without a button press.

- **Auto-OFF feature** after one hour of warning chirps.

- **LED light for low uses**

Twice to 6x the battery life of other pinpointers with LED lights.

- **Patented Proportional Audio/Vibration**

Increases as pinpointer approaches target.

- **Pinpoint tip detection**

plus 360° side scan detection.

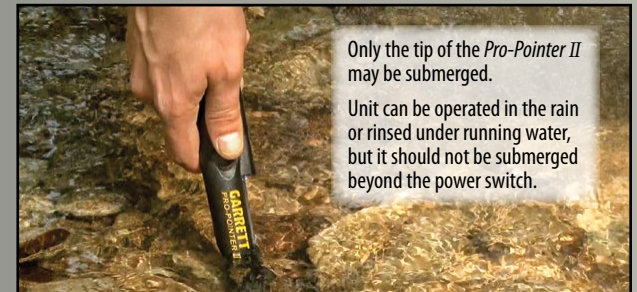
- **Lanyard attachment loop** allows *Pro-Pointer II* to be attached to your belt, digging pouch, or metal detector.

- **Belt holster and 9V battery included**

- **Water resistant**

Meets IEC 60529 IP 66 standards for water and dust protection (*see below*).

\*compared to original Garrett *Pro-Pointer*



Only the tip of the *Pro-Pointer II* may be submerged.

Unit can be operated in the rain or rinsed under running water, but it should not be submerged beyond the power switch.



## GOLD PANS



### 15" SuperSluice

PN: 1650400

- Traps fine gold to nuggets over 1 oz.
- Twin 1/2" riffles



### 10" Backpacker

PN: 1650100

- Great for wet /dry panning or finishing
- Four 1/4" riffles
- Lightweight
- Portable



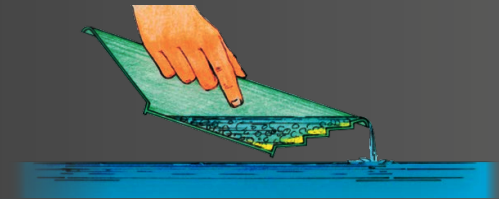
### 14" Sifter/Classifier

PN: 1650200

- Great for wet or dry conditions
- Sifts gold, jewelry, relics and debris
- Fits 5 gallon bucket
- 7/16" (diagonally measured) exit holes



**Garrett's 90° riffled design**  
prevents gold from sloshing out of the pan.



## GOLD PAN KITS



### Deluxe Gold Pan Kit

PN: 1651410

- 14" Gold Trap Pan
- 15" SuperSluice Pan
- 14" Sifter/Classifier
- 10" Backpacker Pan
- Gold Guzzler bottle
- 2 Gold vials
- Tweezers/magnifier
- How to Find Gold field guide by Charles Garrett / Roy Lagal



- Gold Panning is Easy book
- Gold Panning Like a Pro DVD (featuring Freddy Dodge)

### Gold Pan Kit

PN: 1651310

- 14" Gold Trap Pan
- 14" Sifter/Classifier
- 10" Backpacker Pan
- Gold Guzzler Botte



- 2 Gold vials
- Tweezers/magnifier
- How to Find Gold field guide by Charles Garrett and Roy Lagal





## Perfect for Dry Panning

Garrett's *Gravity Trap*® gold pan series has led the prospecting industry for years. These durable pans have been tested and proven worldwide by Charles Garrett, Roy Lagal, and tens of thousands of individual prospectors.

Garrett's *Gravity Trap* gold pans are the perfect tool for gold-seekers of any age. They feature a 90° riffled design that ensures safe, rapid gold recovery in wet or dry conditions. All Garrett pans are lightweight, green for enhanced gold nugget visibility, and are virtually indestructible.



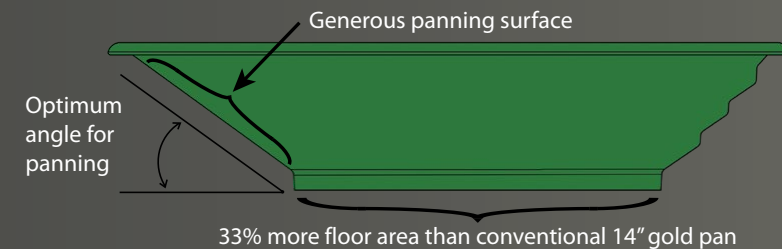
## Introducing a Revolutionary NEW Design!



**14" Gold Trap™**  
PN: 1651100

**An Offset, Acentric Design  
Delivers Improved Performance!**

- Expands the pan's floor size by 33%, as compared to conventional 14" gold pans.
- Maintains the long panning surface and optimum angle necessary for effective panning.
- Patented design (9,662,722 and D776722).
- Allows gold to be driven down more efficiently to the large floor space.
- Larger pan volume allows more material to be processed per pan.
- Includes Garrett's renowned riffles for trapping gold.



Watch "Gold Panning Like a Pro" video with Freddy Dodge on [garrett.com](http://garrett.com).





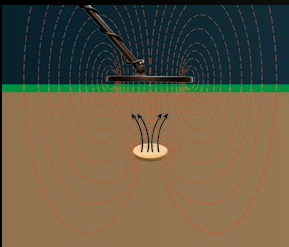
# UNDERSTANDING SEARCHCOILS



## HOW SEARCHCOILS WORK

Understanding the basics of searchcoils will empower you with the ability to choose the best searchcoil for each application. Searchcoils generally consist of two internal sets of coiled wires, a Transmit coil (TX) and a Receive coil (RX). Mono coils can be different in that one coil acts as both the TX and the RX. When the detector is turned on, the TX coil generates a magnetic field in the surrounding space.

When a metallic object is within this generated magnetic field, it will create a distortion in the magnetic field. The RX coil will sense this distortion and send a signal to the control housing.

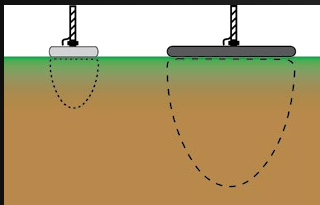


*The transmit coil (TX) creates a magnetic field while the Receive coil (RX) senses distortion in this field and signals the control housing.*

## SEARCHCOIL DEPTH

As a rule of thumb, the detection depth of a searchcoil will be approximately equal to its diameter, for a coin-sized object.

As a searchcoil's size increases, its field pattern becomes larger, less concentrated and it begins to miss small objects. For a coin-sized object, this effect becomes noticeable when using searchcoils larger than about 15" in diameter.



*Generally speaking, the larger the searchcoil, the larger the magnetic field.*

## SEARCHCOIL SHAPES AND SIZES

To help determine the best searchcoil size and shape for your needs, consider the hunting environment in which it will be used and the targets being sought.



Circular

Elliptical

*The two most common searchcoil shapes (not to be confused with configurations) are circular and elliptical.*

- **Elliptical Searchcoils**—more maneuverable than a circular searchcoil. Provides greater coverage than a circular coil due to its elongated length.
- **Circular searchcoils**—most commonly used shape. Provides slightly more detection depth and sensitivity in non-mineralized soil. Searchcoils also come in a 2-box configuration, which are used for detecting deeply buried targets.

### Small Searchcoils (Less than 6" diameter)

- Concentrated magnetic field; the best choice for hunting in areas with a lot of metal debris.
- Ideal for detecting very small objects.
- Less coverage per sweep; more scans required.



## SUPER SNIPER

*Available for GTI, ACEs, AT Pro, AT Gold, AT Max*

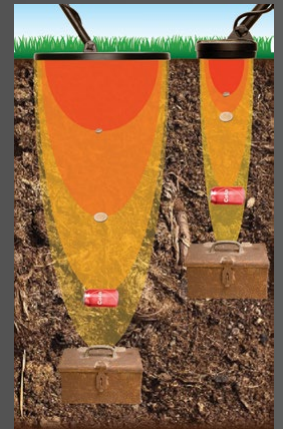
Garrett's smaller *Super Sniper* specialty searchcoils are designed to search in very tight areas or over ground that is littered with metal objects. These popular 4.5" coils offer improved target identification and are also ideal for finding tiny gold nuggets.

### Medium Searchcoils (8"-9" diameter)

- Best choice for general-purpose hunting (including coins and coin-sized targets).
- Provides the best combination of magnetic field concentration, detection depth and capability to detect the greatest range of target sizes within the detection area.
- Lightweight and easy to maneuver.

*There is a direct relationship between the size of a searchcoil and the size of its magnetic field.*

*The magnetic field of a small searchcoil is not as deep as that of a large searchcoil, but is more concentrated.*



### Large Searchcoils (More than 9" diameter)

- Provides greater depth and coverage due to wider and deeper magnetic fields.
- Best choice for hunting targets that are large and deeply buried, such as caches and large relics.
- Larger scan area can be a problem in trashy areas where the searchcoil is detecting several targets at once.





# MULTIPLY YOUR FINDS WITH THE RIGHT SEARCHCOIL

## CONFIGURATIONS

There are five basic searchcoil configurations: Concentric, Mono, Imaging, DD and 2-box. Hunting applications and ground conditions help determine which is the best choice for you.

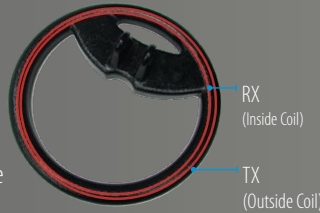
### Concentric Searchcoils

- TX and RX are usually arranged as shown.
- This configuration **provides the largest possible detection field and greatest detection depth**, making the concentric coil potentially the most sensitive configuration available.
- Provides the most symmetrical detection field, allowing ease in pinpointing and consistency in target identification.
- Unfortunately, this configuration is the most susceptible to interference from ground minerals, resulting in substantial performance loss over heavily mineralized ground.



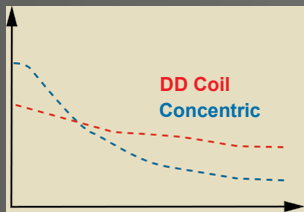
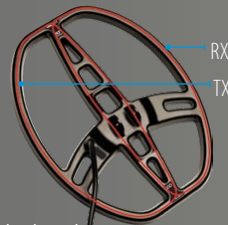
### Mono Searchcoils

- Available only on Pulse Induction Detectors.
- Variation of the concentric configuration. Can be made with the TX and the RX coils located together or as a single coil acting as both the TX and RX.
- Detection and performance characteristics of mono coils are essentially the same as concentric coils.



### DD Searchcoils

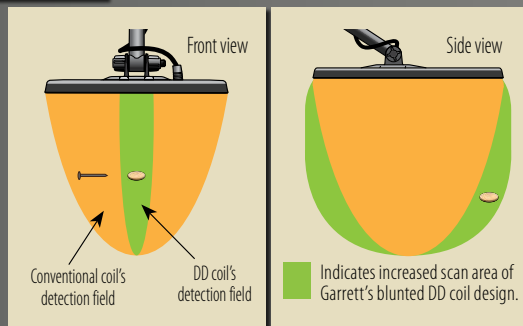
- Both TX and RX are in the shape of a "D".
- Provides greater detection depth and performance in heavily mineralized ground and saltwater.
- A long, narrow detection field runs beneath the DD's overlapping center section from front to back.
- The DD configuration is less sensitive than a concentric searchcoil of the same size, over non-mineralized ground or in air testing.



- DD coils are highly recommended when hunting over mineralized ground commonly found when prospecting and relic hunting. **The DD searchcoil outperforms the concentric searchcoil in highly mineralized soil.**

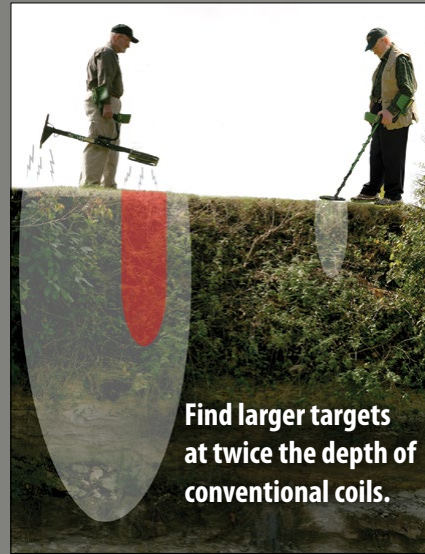
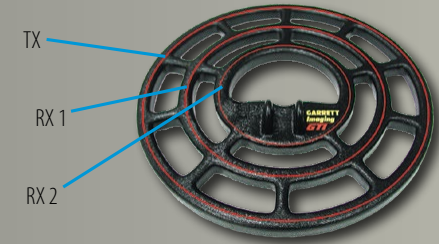
Increasing ground mineralization

The DD coil's narrow detection field offers better target separation than a conventional coil.



### Imaging Searchcoils (Garrett Exclusive)

- An enhanced version of the concentric configuration that features an additional RX coil.
- Extra coil provides additional target information for true target depth perception and true target-sizing capabilities.
- Sizing information helps distinguish between trash and good targets of the same conductivity (e.g. a clad coin vs a soda can).



### 2-box Configuration (Depth Multiplier)

In this configuration, the TX and the RX coils are physically several feet apart. This provides a lightweight, manageable means of achieving the performance of a 3' to 4' diameter searchcoil. Because of its large detection field, the 2-box is the best choice for detecting large, deeply buried objects such as relics and caches. Also, its large detection field ignores objects smaller than 3" in diameter—advantageous when hunting in areas heavily littered with small trash objects.

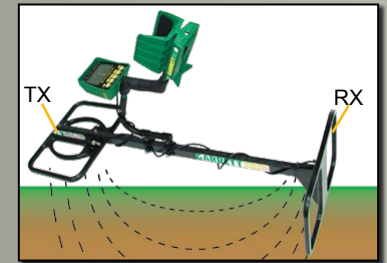
### Garrett TreasureHound™ EagleEye™ Depth Multiplier

PN: 1611800

(Available on GTI 2500 only)

#### Benefits:

- Find larger targets at twice the depth of conventional coils.
- Use the EagleEye front coil for accurate pinpointing and small object detection.
- Easily switch from depth multiplier searching to pinpoint mode with the touch of a button.
- Eliminates the need to switch coils or have a second detector to zero in on a target.



## GTI 2500 EagleEye Depth Multiplier Package

PN: 1120530

### INCREASE YOUR DEPTH 2x–3x ON LARGE TARGETS

GTI 2500 EagleEye Multiplier Package includes the GTI 2500 Metal Detector with the 9.5" Imaging Searchcoil and TreasureHound EagleEye Searchcoil.

#### With Package

TreasureHound EagleEye™  
Searchcoil PN: 1611800  
(Searchcoil only)

For use only with the  
Garrett GTI 2500 detector.





## SEARCHCOIL COVERS



**10" x 14" Coil Cover**  
PN: 1606400



**9.5" Coil Cover**  
PN: 1606500



**9" x 12" Coil Cover**  
PN: 1612600



**7" x 10" Coil Cover**  
PN: 1604300



**6.5" x 9" Coil Cover**  
PN: 1605700



**5" x 10" Coil Cover**  
PN: 1602500



**3" x 7" Coil Cover**  
PN: 1601400



**4.5" Coil Cover**  
PN: 1604200



**8.5" x 11" DD Coil Cover**  
PN: 1606600



**5" x 8" DD Coil Cover**  
PN: 1607400

**You can prevent this!**

Protect your investment with Garrett searchcoil covers.

## BAGS/BACKPACKS



**Digital Camouflage Soft Case, Universal Detector**  
Padded travel/storage bag, 50" length with full zipper opening, carrying handle and backpack straps.  
PN: 1616901



**Stow and go**—Holds any current Garrett detector without removing the searchcoil.

### All-Purpose Carry Bag

Reinforced polyester, 50" length with two zipper pockets. Includes convenient shoulder strap and carrying handles with padded handpad. Sized to hold any current Garrett detector without removing searchcoil.  
PN: 1608700



### Garrett Sport Daypack (shown at right)

This narrow profile pack will hold all the gear and supplies for a full day of detecting. Approximately 14" interior height x 11.5" width.

Includes: six zippered compartments; two internal pouches to separate items; internal sunglasses pouch; exterior webbing grid to secure other items; hideaway hipbelt; side straps to cinch up pack or to secure a jacket or rain gear.  
PN: 1627200

### Garrett All-Purpose Backpack

Approximately 21" interior height x 13" width. Will hold a disassembled Garrett metal detector. Includes: adjustable straps; zippered front accessory pocket; interior searchcoil pouch; pair of side pouches to hold drinks.  
PN: 1651700

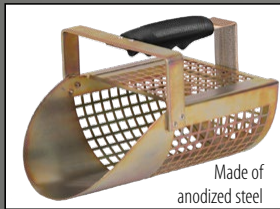




## RECOVERY TOOLS



**Rugged Plastic Sand Scoop**  
PN: 1600971



**Metal Sand Scoop**  
PN: 1600970

Made of  
anodized steel



**Stainless Steel Sand Scoop**  
PN: 1600900

### Camo Digger's Pouch

This 10" deep zippered bag secures with its own belt. Fits up to 48" waist.  
PN: 1612900



Exterior MOLLE-type webbing grid is ideal for attaching PRO-Pointer, cell phone, digging tools, etc.



Interior zippered treasure pocket to separate treasure from trash.



**Camo Pouch 18" Belt Extender** (optional)  
PN: 1613000



### Garrett™ Edge Digger

(7.5" digging blade; 12" total length)  
Robust steel blade with cutting edge teeth. Non-slip blade guard with comfortable rubber handle. Includes Garrett carry sheath for belt mount use.  
PN: 1626200



### Treasure Digger

Avoid marring coins while digging with this tough polymer trowel, with marks to gauge depth of a hole.  
PN: 1606000



## GARRETT GEAR

Visit [garrett.com](http://garrett.com) for T-shirts and other branded items



**Garrett Metal Detectors**  
Metallic logo with textured gold color  
PN: 1663300



**Garrett**  
Black Cap  
PN: 1663100



**NEW Garrett "EST '64" Cap**  
Distressed Mesh Trucker Cap  
PN: 1621100

One size fits most

See other Garrett caps on pages 15, 24, and 32.

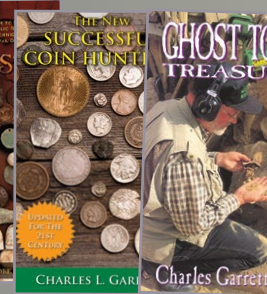
**NEW**

### Garrett "Keepers" Finds Box

Plastic treasure "Keepers" box with foam slits in one compartment for protecting small coins, buttons, and other treasures. Access two separate sides, with sturdy latches, that will hold your best finds.  
PN: 1627900



**NEW**



Since 1974

Visit [garrett.com](http://garrett.com) for more details on all RAM Books

View sample pages from any title!

[garrett.com](http://garrett.com)





# Z-LYNK WIRELESS FREEDOM

# GARRETT Z-Lynk™

Wireless System



Z-Lynk's WR-1 wireless receiver easily clips to your pocket, belt or digging pouch.

## Z-Lynk SPECIFICATIONS

**Operating Frequency:** 2.4 GHz band frequency hopping (prevents interference with nearby headphones and other wireless devices)

**Environmental:** Water resistant; do not submerge.

WR-1 (receiver): IP 52: protects against light rain

WT-1 (transmitter): IP 64: protects against heavy rain

**Speed:** 17 millisecond delay

**Volume:** Adjustable via WR-1 unit

**Battery Type:** Rechargeable Lithium Ion

**Battery Life:** Up to 30 hours per charge

**Charging:** USB (cables included)

**Warranty:** 2 years, limited parts and labor

**Operating Temperature:** -20°C (-4°F) to 60°C (140°F)

*Create wireless freedom with any of your detectors.  
Hear your targets 6x faster than Bluetooth speed!*

See [garrett.com](http://garrett.com) for videos and more information on Z-Lynk products and accessories.



### Z-Lynk Wireless System: 1/4" headphone kit

Includes WT-1 transmitter, WR-1 wireless receiver with 1/4" jack, a 1/4" audio cable, a mounting band, two USB charging cables, and carrying case.

PN: 1627100

Everything needed for creating a wireless detector with 1/4" jack headphones.



WR-1 with 1/4" connector



### Z-Lynk Wireless System: 2-pin AT headphone kit

Includes WT-1 transmitter, WR-1 wireless receiver with 2-pin AT connector, a 2-pin AT audio cable, mounting band, two USB charging cables, and carrying case.

PN: 1627110

Everything needed for creating a wireless detector with Garrett AT headphones.



WR-1 with AT connector

### Garrett Z-Lynk Adapter Cable, 2-pin AT to 1/4"

PN: 1627800

Adapts 2-pin AT headphones to systems with 1/4 inch phoneplug.

(Not compatible with ACE 150, 250, 350 and EuroACE models.)





## OPTIONS & ACCESSORIES



### Z-Lynk Wireless Transmitter

Includes WT-1 transmitter, a 1/4" audio cable, a mounting band, and a USB charging cable.

PN: 1627500

*Keep all of your metal detectors wireless-ready by picking up an additional Z-Lynk transmitter.*



### Z-Lynk Wireless Receiver (for 1/4" headphones)

Includes WR-1 receiver with 1/4" headphone jack and a USB charging cable.

PN: 1627600

*For use with most any headphones with 1/4" jack.*



### Z-Lynk Wireless Receiver (for 2-pin AT headphones)

Includes WR-1 receiver with 2-pin AT connector and USB charging cable.

PN: 1627610

*For use as a replacement or backup unit on any Garrett AT detector.*

### Garrett Z-Lynk 1/4" Audio Cable

PN: 1627400



### Garrett Z-Lynk 2-Pin AT Audio Cable

PN: 1627410

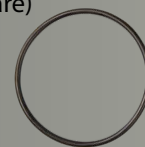


*Needed for Z-Lynk use on Garrett AT detectors. Includes extra mounting band for use with an ATX.*

### Mounting Band (spare)

*For mounting a WT-1 module on a detector.*

PN: 9885100



## GARRETT HEADPHONES



### Garrett MS-3 Z-Lynk Wireless Headphones

- Built-in Z-Lynk receiver. High fidelity audio.
- Use with any Garrett Z-Lynk detector or transmitter module.

PN: 1627710

*See page 4 for full details on Garrett MS-3 Z-Lynk Wireless Headphones AND Garrett MS-3 Wireless Z-Lynk Kit!*



*shown compact*

### Garrett MS-2 Headphones (wired)

- Volume control. Adjust signal levels to suit individual hearing requirements and to enhance weak signals.
- Comfortable headband and ear cushions.
- Reinforced 10-foot coiled cord with right angle.
- Speaker impedance: 8 ohms
- Frequency response: 30-18,000 Hz.



- with 1/4-inch stereo phone plug.

PN: 1627300



- with watertight connector for use on AT Max, AT Pro, AT Gold, ATX or Sea Hunter.

PN: 1627310



### Garrett ClearSound Easy Stow Headphones

- 41" (104.1 cm) cord extends to 82" (208.3 cm)
- Padded ear cups
- In-Line volume control
- Rotating ear pieces

PN: 1612700



### Submersible Headphones

- For use with Garrett AT Max, AT Pro, AT Gold, ATX, and Sea Hunter Mark II metal detectors.
- Padded ear cups

PN: 2202100



### Garrett TreasureSound™ Headphones

Includes in-line volume control.

PN: 1612500



### 1/4" Headphone Adapter

- Allows land-use headphones with a 1/4" male jack to be used with Garrett AT Max, AT Pro, AT Gold, ATX, and Sea Hunter. (Not intended for submerged use.)

PN: 1626000



# You could win a FREE Wireless Pro-Pointer AT Z-Lynk System

Each month, Vaughan Garrett selects one U.S. and one International winner from all the Garrett customers who submit their testimonial photos and stories. "By about the fifteenth of each month, I will announce who I selected as my favorites from all the previous month's submissions," Vaughan explains.

Vaughan's Favorite Find winners in the past have received a free *Pro-Pointer AT* pinpointer or even a metal detector. Visit [garrett.com](http://garrett.com) to see what great gift item Vaughan is currently giving away!

**FREE Garrett branded items for everyone who enters!**

**There are 3 ways to submit a story to Vaughan:**

1. Email [testimonials@garrett.com](mailto:testimonials@garrett.com)
2. Mail to: Garrett Metal Detectors  
Attn: Marketing Dept.  
1881 W. State Street  
Garland, TX 75042
3. Submit your photo and story online by using the "Submit a Story" form:

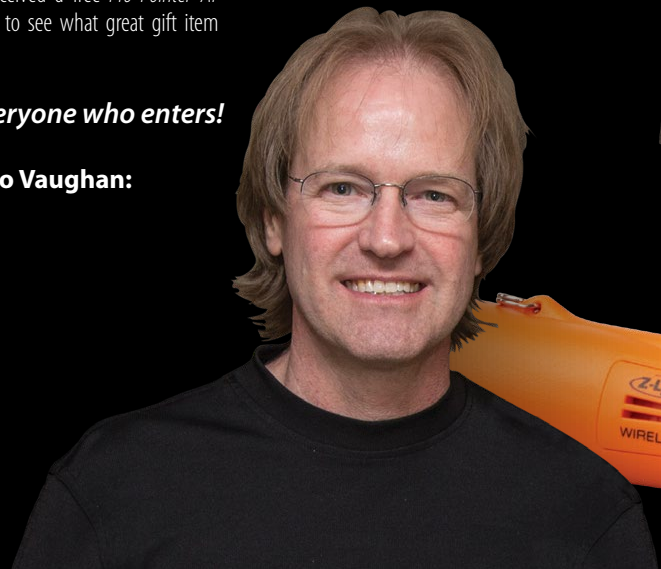
<http://www.garrett.com/story/>

**Here are some  
of the recent  
winners!**

Visit [garrett.com](http://garrett.com) to submit your story. You could be next!



*Vaughan Garrett's*  
**FAVORITE FIND  
OF THE MONTH**



**GARRETT**  
METAL DETECTORS  
[garrett.com](http://garrett.com)

## GARRETT METAL DETECTORS

1881 W. State Street  
Garland, TX 75042

Tel: 1.972.494.6151

Fax: 1.972.494.1881

Email: [sales@garrett.com](mailto:sales@garrett.com)

## Sport Division

Toll Free (US & Canada): **1.800.527.4011**

## Security Division

Toll Free (US & Canada): **1.800.234.6151**

Website: [www.garrett.com](http://www.garrett.com)

Contact Garrett for more product information,  
or visit your local dealer:

Warranty Protection: Garrett stands behind every product it builds and offers dependable warranty protection to each buyer. All Garrett land detectors and searchcoils are protected by a two-year limited parts and labor warranty. Sea Hunter is protected by a one-year limited parts and labor warranty. In the course of product improvement, Garrett reserves the right to make changes to the design and technical features of its products.

ACE 150, ACE 200/i, ACE 250, ACE 300/i, ACE 350, ACE 400/i, All Metal Iron Audio, AT Max, AT Gold, AT Pro, ATX, Automatic Ground Track, Coin Alert, Crossfire, Deepseeker, Depth Multiplier, EagleEye, Enhanced Iron Resolution, Fast Track, Garrett's Gravity Trap, GTA, Graphic Target Analyzer, GTI, Graphic Target Imaging, GTP, Graphic Target Profiling, Ground Balance Window, Iron Audio, Master Hunter, Power Master, Pro Mode Audio, Pro-Pointer, Pro-Pointer AT, RAM Books, Scan Track, Scorchers, Sea Hunter Mark II, ScubaMate, Super Deep Imaging, Super Sluice, Super Sniper, Target Imaging, Texas Twister, TreasureEye, TreasureHound, Treasure Vision, Treasure Sound, Z-Lynk, Garrett Metal Detectors and [garrett.com](http://garrett.com) are trademarks and registered trademarks of Garrett Electronics, Inc.

PN1540019.A 06/2019 © 2019 Garrett Electronics, Inc.

**Products and special offers listed in this Buyer's Guide are effective through June 30, 2020.**

