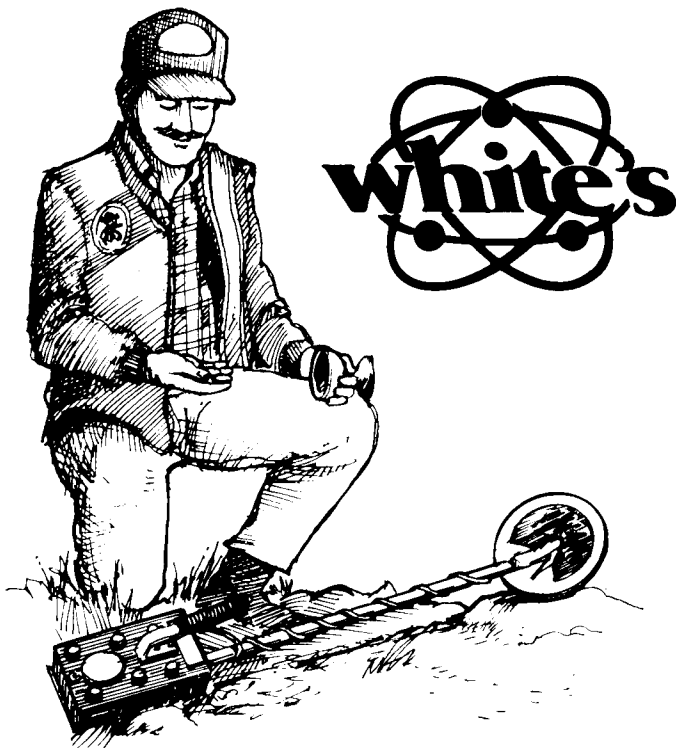


OPERATOR'S MANUAL  
**COINMASTER**  
**1000 Series 3**



**A Message from  
Mr. Kenneth White, Sr.  
President, White's Electronics**

Congratulations! You are now the proud owner of one of the world's finest detectors. You'll enjoy the many relaxing hours you'll spend with your new detector.

Ahead of you lie exciting experiences you'll never forget. For years to come you'll have yarns to spin about the places you'll visit, the people you'll meet, the history you'll learn, and the treasures and relics you'll uncover. We envy your journey and wish you every success.

Before we tell you how to assemble and operate your instrument, there are two important points to leave you with:

1. Your new detector is precision-made and has been carefully tested at our factory. Properly cared for, it will last for years and years. Treat it like a good friend and it should never let you down.
2. Any piece of fine equipment is only as good as the person operating it. Right now your detector is "smarter" than you, so you've got some catching up to do. Become very familiar with your instrument. Practice as much as you can. Soon it will become a part of you.

You and your metal detector will make an outstanding team. We've known many "shooters" who could follow in the tracks of others and find buried coins and rings the others had missed. You've got the equipment to out-shoot most anyone. Now all you need is the practice.

Good Hunting,

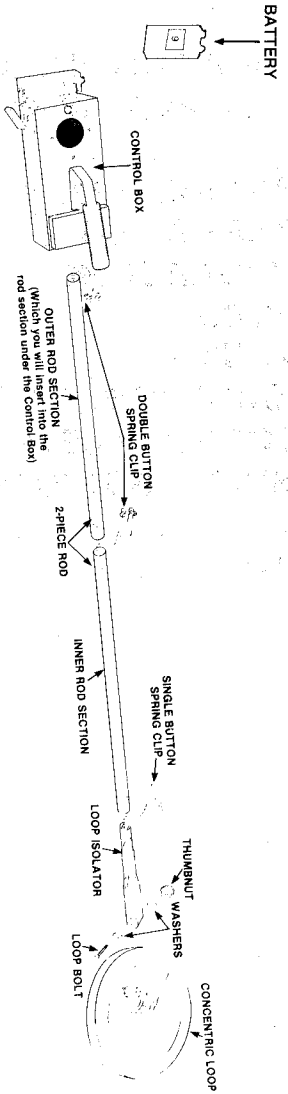
A handwritten signature in black ink that reads "Kenneth White". The signature is written in a cursive, flowing style.

Kenneth White, Sr.

# INDEX

<b>PARTS IDENTIFICATION AND ASSEMBLY</b> . . . . .	<b>4</b>
<b>EXPLANATION OF FEATURES:</b>	
<b>TUNER</b> . . . . .	<b>5</b>
<b>MODE: TRANSMIT RECEIVE</b> . . . . .	<b>6</b>
<b>LOW BATTERY ALERT</b> . . . . .	<b>7</b>
<b>1/4 " HEADPHONE JACK</b> . . . . .	<b>7</b>
<b>SEARCH METHODS</b> . . . . .	<b>8</b>
<b>STANDARD BATTERY</b> . . . . .	<b>9</b>
<b>CAUTIONS ABOUT THE BATTERIES</b> . . . . .	<b>9</b>
<b>PROPER CARE OF YOUR DETECTOR</b> . . . . .	<b>10</b>
<b>NATIONAL SERVICE PROGRAM</b> . . . . .	<b>11</b>
<b>WARRANTY</b> . . . . .	<b>12</b>
<b>CODE OF ETHICS</b> . . . . .	<b>13</b>

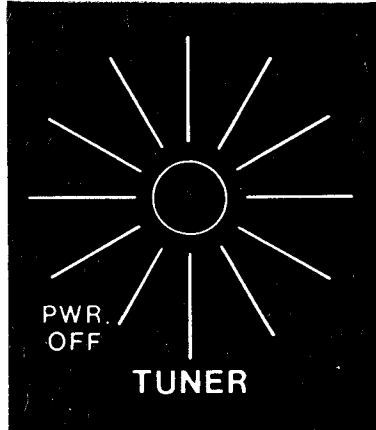
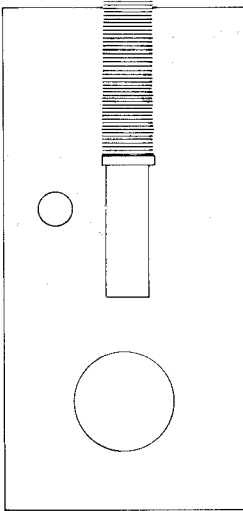
# PARTS IDENTIFICATION AND ASSEMBLY



Typical illustration of a White's metal detector

# EXPLANATION OF FEATURES

## TUNER



Only one control is needed to operate this detector. The TUNER performs all of the following functions, with a single turn:

1. Turns the detector on and off.
2. Sets the detector's Threshold.
  - a. The THRESHOLD is indicated by an audio tone that is barely heard. It represents the detector's maximum operating sensitivity.
3. Tunes the detector for the area in which you search. To tune the instrument, proceed as follows:
  - a. Hold the detector so its loop is about  $\frac{1}{2}$ " - 1" above the ground.
  - b. Turn the TUNER to the right until the tone is barely heard.
  - c. Detector is now ready for metal detecting.
4. Automatically sets maximum audio level.
5. Automatically neutralizes the effects of ground mineralization.

# **EXPLANATION OF FEATURES**

## **MODE: TRANSMIT RECEIVE**

The detector has a Transmit-Receive mode of operation that **DETECTS ALL METALS**. It may be used for coin hunting, prospecting, relic hunting, beachcombing and treasure hunting.

1. Search with the loop level to the ground and as close to the ground as possible.

**NOTE:** If the loop is tilted or lifted, the tone may change due to variations of the ground and mineralization.

2. The loop does not have to be in motion to detect a metal object.

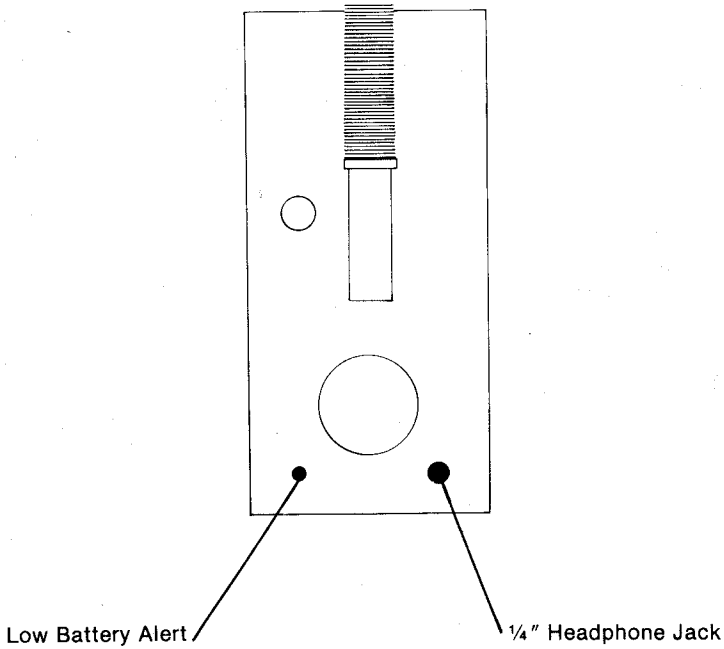
**FOR YOUR INFORMATION:**

Mineralization is the ferric oxide (iron) or magnetic content of the soil.

# EXPLANATION OF FEATURES

## LOW BATTERY ALERT

The LOW BATTERY ALERT is a light that glows when the battery is low and needs replacing.



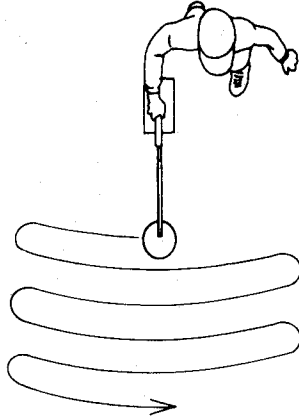
# EXPLANATION OF FEATURES

## 1/4" HEADPHONE JACK

Allows the user to listen to the audio signal on mono headphones.

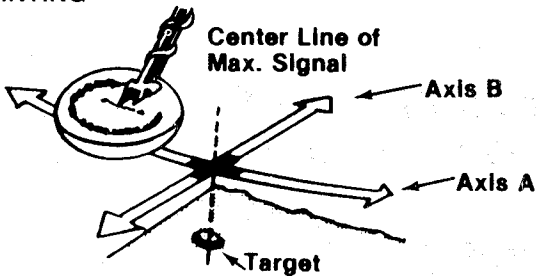
- A) Disconnects the speaker output.
- B) Reduces battery drain.

# SEARCH METHODS



1. Always keep the loop flat and parallel to the ground. When raised, the depth penetration is decreased.
2. Swing the loop in front while searching. Each swing may cover an area from 4-6 feet in width.
3. The loop should be passed along the ground in smooth, even swings. It does not have to be swung quickly.
4. When a target is detected, sweep it from several directions to isolate it.
5. To pinpoint a target for ease of recovery, "X" the target. The object will be at the center of the "X". See illustration below.

## PINPOINTING

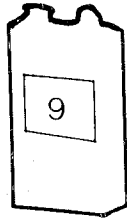




# STANDARD BATTERY

This instrument uses a 9 volt battery. To replace the battery, proceed as follows:

1. Open the battery compartment door at the rear of the control box.
2. Remove the battery from the clip. Carefully disconnect the terminal lead and replace the battery.
3. Reconnect the terminal lead and replace the battery in the clip.
4. Close and latch the battery compartment door.
5. The standard battery should last between 10 - 12 hours under normal conditions.



## CAUTIONS ABOUT BATTERIES

1. Do not dispose of batteries in a fire.
2. Protect the battery from being shorted. Burns may result and the battery may be damaged.
3. Store batteries in a cool, dry place.

# PROPER CARE OF YOUR DETECTOR

The following are precautions you should take to protect your instrument from harm, ensure its long life and avoid nullifying the warranty.

**CLEANING:** The loop and probe are waterproof. They can be cleaned with fresh water and a mild cleanser. After cleaning, however, dry the instrument thoroughly. **CAUTION:** The instrument case is not waterproof, and water - if allowed to enter it - will damage electronic components.

**WEATHER CONDITIONS:** Protect your detector from excessively cold weather. Freezing can damage the electronic components, the case and/or the battery. Excessive heat can also damage the instrument. Never leave it in the sun. If it's left in a car on a hot day, cover it to protect it from the direct rays of the sun, and then leave the windows slightly open to permit ventilation. Protect your detector if you operate it in the rain, as water may get into the instrument case.

**SALT WATER:** Salt water is very corrosive! Immediately after your detector has been exposed to salt water, rinse it thoroughly with fresh water, being careful not to allow water to enter the instrument case. Then wipe it with a cloth dampened with fresh water and dry it thoroughly.

## ADDITIONAL PRECAUTIONS:

- a. Avoid dropping your detector.
- b. Do not use any lubricants on any part of your metal detector.
- c. Avoid sharp jars to the loop.
- d. Do not allow battery to corrode inside the instrument.
- e. Do not alter or modify your instrument during its warranty period. Alterations will void the warranty.

# **A NATIONAL SERVICE PROGRAM**

**THE SERIAL NUMBER IS ON THE SILVER TAG INSIDE THE BATTERY COMPARTMENT.**

**THE CODE NUMBER IS ON THE WHITE TAG.**

White's Electronics has always been concerned with the absolute quality of its mineral/metal detectors. Service after-the-sale is also of equal importance. In an effort to further the quality of service to our customers, White's reorganized its warranty service program significantly. There are now four factory authorized National Warranty Service Centers located regionally around the continental U.S. These Service Centers are identical to the Factory Service Center in Sweet Home, Oregon. In order to ensure you will get the finest service possible for your detector, the technicians in each National Warranty Service Center are Factory trained and given on-going training for new products and improved service techniques. They can also repair your out of warranty instruments with efficiency and timeliness.

Simply send the detector to your nearest authorized warranty service center. You must provide proof of date of purchase before the unit is shipped. If the unit has failed within the first 90 days of purchase, shipping will be prepaid.

If the unit fails after the first 90-day period, the customer is responsible for shipping costs. Please also include \$5.00 for return postage, handling and insurance.

Any repair work performed by other than a White's National Warranty Service Center will automatically void the warranty.

If a problem occurs with your metal detector, you may wish to contact an authorized White's dealer. In many cases the dealer can solve the problem. If not, your detector will be repaired under the Warranty Program.

**TO LEARN THE NAME AND LOCATION OF YOUR NEAREST WHITE'S DEALER CALL: TOLL FREE 1-800/547/6911**

## White's Electronics, Inc. Limited Warranty

If within one years (12 months) from the original date of purchase, your White's detector fails due to defects in either material or workmanship, White's Electronics will repair or replace at its option, all necessary parts without charge for parts or labor.

Simply return the complete detector to the dealer where you purchased it, or to your nearest Authorized Service Center. The unit must be accompanied by a detailed explanation of the symptoms of the failer. You must provide proof of date-of-purchase before the unit is serviced.

Items excluded from this warranty are non-rechargeable batteries, and other accessories.

The warranty is not transferable. Nor is it registered unless the Warranty Registration Card is returned to the factory address below within ten (10) days of original purchase for the purpose of recording that date.

The warranty does not cover damage caused by accident, misuse, neglect, alterations, modifications, unauthorized service, or prolonged exposure to corrosive compounds, including saltwater.

Duration of any implied warranties (e.g., merchantability and fitness for a particular purpose) shall not be longer than the stated warranty. Neither the manufacturer or retailer shall be liable for any incidental or consequential damages. Some states, however, do not allow limitations on length of implied warranties, or the exclusion of incidental or consequential damages. Therefore, the above limitations and exclusions may not apply to you.

In addition, the stated warranty gives you specific legal rights, and you may also have other rights which vary from state-to-state.

**THE FOREGOING IS THE ONLY WARRANTY PROVIDED BY WHITE'S AS THE MANUFACTURER OF YOUR METAL DETECTOR. ANY "EXTENDED WARRANTY" PERIOD BEYOND ONE YEAR, WHICH MAY BE PROVIDED BY A DEALER OR OTHER THIRD PARTY, ON YOUR DETECTOR, IS WITHOUT WHITE'S AUTHORITY INVOLVEMENT AND CONSENT AND WILL NOT BE HONORED BY WHITE'S.**



WHITE'S ELECTRONICS, INC.  
1011 PLEASANT VALLEY ROAD  
SWEET HOME, OREGON 97386

# CODE OF ETHICS

Treasure hunting is the kind of new hobby that fires the imagination and generates its own enthusiasm. It's the most natural thing in the world to want to dig as fast as you can the minute you hear that first loud unmistakably "good" signal. It will be a real thrill to discover there's treasure right beneath your feet!

But wait a minute! We strongly urge you to adopt a code of ethics which will preserve the environment and also the rights of treasure hunters to operate detectors with as few restrictions as possible.

Before you even begin a search, check the law, ordinance or regulations about hunting on publicly owned sites. Abide by the rules. If the area is private property, get written permission from the owner to search it. You may find he will be more eager to give permission if you suggest sharing your finds with him, or if you offer to search for a specific item he has lost.

**ABOUT DIGGING:** In lawn areas limit the size of the hole to a maximum of two inches in diameter, cutting a plug of sod which can be easily replaced. After you take your finds, be sure to carefully fill the hole. **HOLES ARE BOTH UNSIGHTLY AND DANGEROUS!**

Detectors designed for locating large and deeply buried objects should be used with discretion - never in the lawn area, and with careful judgement in other locations. Consider the scar you may leave, before you start digging. This will vary a lot from one part of the country to another, depending on local soil and climatic conditions. Public officials and private property owners will be much more likely to allow continued treasure hunting if you do no environmental damage. You may even be able to increase your reputation as an ethical hunter by volunteering to carry out and dispose of whatever trash items you find.

Adoption of these attitudes can only enhance the public's opinion of treasure hunters and assure that many areas, both public and private, remain open to you and your new detector.

**white's electronics, inc.** 1011 Pleasant Valley Rd. Sweet Home, Oregon 97386

**P/N 621-0252**

**REVISED 12/90**

**Printed in U.S.A.**